

This is the author's peer reviewed, accepted manuscript. However, the online version of record will be different from this version once it has been copyedited and typeset.

PLEASE CITE THIS ARTICLE AS DOI: 10.1063/1.50037115

3D simulations of vertical displacement events in tokamaks: A benchmark of M3D-C¹, NIMROD and JOREK

F.J. Artola¹, C.R. Sovinec², S.C. Jardin³, M. Hoelzl⁴, I. Krebs⁵, and C. Clauser³

¹ITER Organization, 13067 St. Paul Lez Durance Cedex, France

²University of Wisconsin-Madison, Madison, Wisconsin 53706-1609, USA

³Princeton Plasma Physics Laboratory, P.O. Box 451, Princeton, New Jersey 08543-0451, USA

⁴Max Planck Institute for Plasma Physics, Boltzmannstr. 2, 85748 Garching b. M., Germany

⁵FOM Institute DIFFER - Dutch Institute for Fundamental Energy Research, De Zaale 20, 5612 AJ Eindhoven, the Netherlands

Email: javier.artola@iter.org

Abstract

In recent years, the nonlinear 3D magnetohydrodynamic codes JOREK, M3D-C¹ and NIMROD developed the capability of modeling realistic 3D vertical displacement events (VDEs) including resistive walls. In this paper, a comprehensive 3D VDE benchmark is presented between these state-of-the-art codes. The simulated case is based on an experimental NSTX plasma but with a simplified rectangular wall. There are differences between the physics models and numerical methods, and the VDE evolution leads to sensitivities on the initial conditions that cannot be avoided as can be done in ELM and sawtooth simulations (due to the non-cyclical nature of VDEs). Nonetheless, the comparison serves to quantify the level of agreement in the relevant quantities used to characterize disruptions such as the 3D wall forces and energy decay. The results bring confidence regarding the use of the mentioned codes for disruption studies, and they distinguish aspects that are specific to the models used (e.g. reduced versus full MHD models). The simulations show important 3D features for a NSTX plasma such as the self-consistent evolution of the halo current and the origin of the wall forces. In contrast to other reduced MHD models based on an ordering in the aspect ratio, the ansatz based JOREK reduced MHD model allows capturing many aspects of the 3D dynamics even in the spherical tokamak limit considered here.

This is the author's peer reviewed, accepted manuscript. However, the online version of record will be different from this version once it has been copyedited and typeset.

PLEASE CITE THIS ARTICLE AS DOI: 10.1063/1.50037115

1 Introduction

Vertical displacement events (VDEs) are axisymmetric instabilities that arise for elongated plasmas when the control of the vertical position is lost. In future large fusion devices such as ITER, major disruptions will unavoidably lead to the loss of plasma control [1] and a resulting VDE. Such events drive the plasma column into the wall, causing large thermal and electromagnetic loads to the plasma facing components and to the vacuum vessel [2]. During VDEs, additional 3D MHD instabilities can arise resulting in the localization of the loads and in net sideways forces. Moreover, it has been observed that these forces can rotate toroidally, leading to large forces on the vacuum vessel and its supporting structures when the rotation frequency resonates with the natural frequencies of the vessel [3, 4].

In this respect, the development of validated 3D MHD codes including the effect of resistive walls is crucial to the study of these loads for future machines. Although axisymmetric codes such as DINA [5], TSC [6] or CarMa0NL [7] allow studying many crucial aspects of disruptions, they cannot take into account these 3D effects. Moreover, for VDEs in which the vertical motion precedes the thermal energy loss (known as *hot* VDEs), the edge safety factor (q_a) is strongly reduced due to the slow decay of the plasma current during the vertical motion [8]. In such cases, axisymmetric codes may impose $q_a \geq 1$ by modifying the current profile, otherwise q_a drops below unity when the minor radius approximately drops by a factor of 2 ($q_a \sim a^2/I_p$). When q_a falls below 2 or so, the configuration will no longer remain axisymmetric [2, 9]. Non-axisymmetric modes will grow, producing horizontal forces and stochastic field lines. The minimum q_a and the level of current density are strongly influenced by MHD activity and parallel dynamics in the stochastic field line region. The dynamics affect the current density directly and by modifying the electrical resistivity through the fast temperature reduction.

In recent years, simulations of 3D VDEs have been performed by Strauss [10] with the M3D code [11], Sovinec and Bunkers [12] with NIMROD [13], Pfefferlé, et al [14] with M3D-C¹ [15] and Artola [16] with JOREK [17, 18]. However, no benchmark for 3D VDEs has been performed among these codes. Except for highly idealized cases, there are no analytical solutions for events that involve chaotic magnetic field lines and large vertical displacements. The work presented in this article is therefore an essential contribution to the verification and validation of these numerical codes.

In this work, we present such a benchmark for the codes JOREK, M3D-C¹ and NIMROD. These three codes are among the limited number of codes capable of simulating 3D MHD instabilities in tokamak geometry including resistive walls. The benchmark is addressing the full 3D dynamics and is partly based on the axisymmetric benchmark that was already performed between these three codes [19]. The goal of this work is to demonstrate the consistency among these codes and to provide the fusion community with a useful benchmark for MHD simulations of disruptions.

This paper is organised as follows. In section 2 we revisit the models and the numerics used by the different codes. The setup and the parameters of the benchmark case are described in section 3. The comparison of the obtained results and the analysis of the 3D VDE simulations are presented in section 4. Finally, we summarize our conclusions in section 5.

2 Models and codes description

The single fluid MHD model used by the three codes for this benchmark is given by the equations

$$\mathbf{E} = -\mathbf{v} \times \mathbf{B} + \eta \mathbf{J}, \quad (1)$$

$$\mu_0 \mathbf{J} = \nabla \times \mathbf{B}, \quad (2)$$

$$\frac{\partial \mathbf{B}}{\partial t} = -\nabla \times \mathbf{E}, \quad (3)$$

$$\rho \frac{\partial \mathbf{v}}{\partial t} = -\rho \mathbf{v} \cdot \nabla \mathbf{v} - \nabla p + \mathbf{J} \times \mathbf{B} + \nabla \cdot \boldsymbol{\tau}, \quad (4)$$

$$\frac{\partial \rho}{\partial t} = -\nabla \cdot (\rho \mathbf{v}) + \nabla \cdot (\mathbf{D} \nabla \rho), \quad (5)$$

$$\frac{\partial p}{\partial t} = -\mathbf{v} \cdot \nabla p - \gamma p \nabla \cdot \mathbf{v} + (\gamma - 1) \nabla \cdot (\boldsymbol{\kappa} \nabla T) + (\gamma - 1) \boldsymbol{\tau} : \nabla \mathbf{v} \quad (6)$$

where \mathbf{E} is the electric field, \mathbf{v} is the mean flow velocity, \mathbf{B} is the magnetic field, \mathbf{J} is the current density vector, ρ is the ion density, p is the total pressure and $T \equiv T_e + T_i$ is the total temperature. The other parameters are the plasma resistivity (η), the stress tensor ($\boldsymbol{\tau}$), the particle diffusion tensor (\mathbf{D}), the heat conductivity tensor ($\boldsymbol{\kappa}$), the vacuum permeability (μ_0) and the ratio of specific heats (γ). The particle diffusion and heat conduction tensors are decomposed into parallel and perpendicular directions relative to the magnetic field ($\mathbf{b} = \mathbf{B}/|\mathbf{B}|$)

$$\mathbf{D} = D_{\parallel} \mathbf{b} \otimes \mathbf{b} + D_{\perp} (\mathbf{I} - \mathbf{b} \otimes \mathbf{b}) \quad (7)$$

$$\boldsymbol{\kappa} = \kappa_{\parallel} \mathbf{b} \otimes \mathbf{b} + \kappa_{\perp} (\mathbf{I} - \mathbf{b} \otimes \mathbf{b}) \quad (8)$$

where \mathbf{I} is the identity tensor. For the simulations presented in this paper, the Ohmic heating source, radiation losses and external particle, momentum and energy sources are not included to keep the setup simple. Except for the plasma resistivity, for which a Spitzer-like temperature dependence is used ($\eta \propto T_e^{-3/2}$), the other coefficients ($\kappa_{\parallel}, \kappa_{\perp}, D_{\parallel}, D_{\perp}$) do not depend on any variable and are spatially constant. The exact values for these coefficients used in our computations can be found in Table 2. The form of the stress tensor for each code is given in the code-specific subsections below.

The MHD equations (1)-(6) are solved in a volume delimited by a resistive wall (see the blue line in Figure 1 (c)). Inside the resistive wall, Ohm's law is simply

$$\mathbf{E} = \eta_w \mathbf{J}_w \quad (9)$$

where η_w is the wall resistivity, which for this benchmark is spatially constant, and \mathbf{J}_w denotes the wall current density.

Boundary conditions Dirichlet boundary conditions are applied for the fluid variables at the plasma-wall interface. The temperature and density B.C.s are simply $\rho = \rho(t = 0)$ and $T = T(t = 0)$. These conditions do not capture the density and temperature variations along the plasma-wall interface that may take place in experiments. The extension of boundary conditions to more comprehensive modeling is the subject of ongoing work [20, 21]. Although the three codes set a no-normal flow boundary condition at the plasma-wall interface ($\mathbf{v} \cdot \mathbf{n} = 0$ where \mathbf{n} is the normal vector to the boundary), NIMROD and M3D-C¹ set all the velocity components to zero ($\mathbf{v} = \mathbf{0}$) whereas in JOREK, only the components normal to the wall and parallel to the magnetic field are set to zero ($\mathbf{v} \cdot \mathbf{n} = \mathbf{v}_{\parallel} = \mathbf{0}$). For all three codes, the modeling is analogous to the cold-wall fixed thermal-conduction computations of Section III.C in Ref. [20]. There, it is shown that rapid open-field heat transfer to cold walls keeps the halo region relatively thin, and the evolution is insensitive to boundary conditions on \mathbf{v} . With the combination of $\mathbf{v} \cdot \mathbf{n} = 0$, $D \neq 0$, and the fixed- ρ boundary condition, loss of mass occurs through particle diffusion at the plasma-wall interface and is decoupled from the magnetic field due to the temperature-dependent resistivity. The treatment of boundary conditions for the magnetic field is code dependent and is explained below.

Feature/Code	JOREK	M3D-C ¹	NIMROD
Toroidal discretization	Fourier harmonics	Cubic Hermite elements	Fourier harmonics
<i>R-Z</i> plane elements	Quadrilateral isoparametric bicubic Bezier	Triangular reduced-quintic	Quadrilateral bicubic
Continuity	G^{1*}	C^1	C^0
Wall model	Axisymmetric thin wall	Axisymmetric thick wall	Axisymmetric thin wall
Vacuum region	Un-meshed Green's function method	Meshed up to outer boundary	Meshed up to outer boundary
MHD model	Reduced MHD	Full MHD	Full MHD
Time-advance	Implicit (Gears)	Split-implicit	Implicit leapfrog

Table 1: Summary of the different numerical properties of the code versions used in the present benchmark. *Note that G continuity stands for geometric continuity instead of parametric continuity (C), which implies that derivatives in real space are continuous (e.g. $\partial\psi/\partial R$) but that derivatives on the local element coordinates can be discontinuous across the finite elements.

The primary numerical properties of the codes are summarized in table 1. The following subsections describe the particularities of the models used in JOREK, M3D-C¹ and NIMROD.

JOREK

JOREK is a fully implicit non-linear extended MHD code for realistic tokamak geometries including open field-line regions [17]. Although a full MHD model is available in JOREK [22, 23], the extension for resistive walls has not yet been implemented for that physics model. For this benchmark, we use a reduced MHD model that is based on the following ansatz for the magnetic field and the mean plasma velocity

$$\mathbf{B} = \nabla\psi \times \nabla\phi + F_0 \nabla\phi, \quad (10)$$

$$\mathbf{v} = -\frac{R^2}{F_0} \nabla\Phi \times \nabla\phi + \mathbf{v}_{\parallel}, \quad (11)$$

where ψ is the poloidal magnetic flux, Φ is the electrostatic potential and $F_0 = RB_\phi$ is a constant representing the main reduced MHD assumption, which is that the toroidal field is fixed in time. However, poloidal currents are not fixed in time and they evolve according to the current conservation and momentum balance equations; only their contribution to the toroidal field is neglected. Note that the reduction of the equations is ansatz-based and does not result from geometrical ordering assumptions. The specific projection of equations (1)-(6) together with the ansatz is explained in detail in [24]. The form of the divergence of the stress tensor in the poloidal plane projection is $\nabla \cdot \boldsymbol{\tau}|_{\text{pol}} = R^2 \mu \nabla\phi \times \nabla w_\phi \approx \mu \nabla^2 \mathbf{v}_{\text{pol}}$, where μ is the dynamic viscosity, $w_\phi \equiv \nabla_{\text{pol}}^2 \Phi$ is the toroidal vorticity, and the subscript "pol" denotes the directions lying on the poloidal plane. For the parallel direction, the divergence of the stress tensor is chosen as $\nabla \cdot \boldsymbol{\tau}|_{\parallel} = \mu \nabla^2 v_{\parallel}$.

The resistive wall and the boundary conditions for the magnetic field are included by coupling JOREK to the STARWALL code [16, 18, 25]. The coupling is performed by solving the full vacuum domain with a Green's function method and therefore the vacuum does not need to be meshed. STARWALL uses the thin wall assumption and discretises the wall with linear triangular elements. Although the employed wall formalism is implemented for 3D thin walls including holes, the used setup is restricted to an axisymmetric wall. The no-normal flow boundary condition that is common to the three codes implies that the boundary conditions in JOREK must be $\mathbf{v}_{\parallel} = 0$ and $\Phi = 0$. Since in reduced MHD the poloidal electric field only depends on the electric potential ($\mathbf{E}_{\text{pol}} = \nabla_{\text{pol}}\Phi$), the no-normal flow condition ($\Phi = 0$) implies that the plasma-wall interface acts as a perfect conductor in the poloidal direction along the boundary ($\mathbf{E}_{\text{pol}} \times \mathbf{n} = 0$). Note that this is not the case in M3D-C¹ and NIMROD, where at the boundary $\mathbf{E}_{\text{pol}} \times \mathbf{n} = \eta \mathbf{J}_{\text{pol}} \times \mathbf{n} \neq 0$. Finally since the resulting momentum equation contains third-order derivatives on Φ , an additional boundary condition is applied for the toroidal vorticity ($w_\phi = 0$).

JOREK discretizes the poloidal plane with quadrilateral bicubic Bezier elements using an isoparametric mapping [26]. The variation along the toroidal direction is represented by Fourier harmonics and for the time advance typically the Crank-Nicolson or the BDF5 Gears scheme is used.

M3D-C¹

M3D-C¹ is a versatile MHD code with a number of options. It can be run in the 2D (axisymmetric) mode, a linear-3D mode (for a single toroidal harmonic), or in a fully 3D nonlinear mode as was used for this paper. The magnetic vector potential and ion velocity are represented in terms of scalar quantities as $\mathbf{A} = \psi \nabla \phi + R^2 \nabla \phi \times \nabla f - F_0 \ln R \nabla Z$ and $\mathbf{v} = R^2 \nabla U \times \nabla \phi + w R^2 \nabla \phi + R^{-2} \nabla_{\text{pol}} \chi$. Here (R, ϕ, Z) are cylindrical coordinates. The function f is constrained to be regular at the origin so that the constant F_0 is proportional to the total current in the toroidal field magnets. The code can be run in the 2-variable reduced MHD option where only (ψ, U) are advanced in time, in the 4-variable reduced MHD option where (ψ, f, U, w) are advanced in time, in the full single fluid MHD option (used in this paper), or in a 2-fluid MHD option. Implicit hyper-resistivities with spatially constant values of $2.76 \times 10^{-9} \Omega \text{ m}^3$ and $1.10 \times 10^{-9} \Omega \text{ m}^3$ were used in the equations for ψ and f respectively. The stress tensor in M3D-C¹ is $\boldsymbol{\tau} = \mu[\nabla \mathbf{v} + \nabla \mathbf{v}^T]$. Although M3D-C¹ has the option to advance the pressure, equation (6), in these calculations we advanced the temperature instead, T , the same as described by equation (13) in the NIMROD section that follows.

In the resistive wall region, only the magnetic vector potential variables are advanced in time, with Ohm's law: $\mathbf{E} = \eta_w \mathbf{J}$, where the wall resistivity may be a function of space even if it is set to a constant in this benchmark. In the vacuum region: $\nabla \times \nabla \times \mathbf{A} = \mathbf{0}$ is enforced. This region is directly meshed and solved by using perfect conductor boundary conditions (i.e. $\mathbf{B} \cdot \mathbf{n} = \mathbf{B} \cdot \mathbf{n}(t = 0)$) at the outermost computational boundary containing the wall and the vacuum regions. The mesh and outermost boundary is given in the axisymmetric version of this benchmark (see purple curve of Figure 1 in [19]). The location of the outermost boundary is such that the VDE growth rates are close to the no-outer-boundary growth rates [19].

The code uses an unstructured mesh with triangular elements in the (R, Z) plane, and extruded in a structured manner in the toroidal direction. The mesh is normally adapted to the geometry and the problem, so that a finer mesh size is used in locations where large gradients are expected. All scalar variables are expanded in 3D finite elements that are a tensor product of the Bell [27] element in the (R, Z) plane and Hermite cubic elements in the toroidal angle ϕ . This representation enforces continuity of each scalar and all of its first-derivatives across element boundaries. In the 3D nonlinear code, a split-implicit time advance is used where the velocity variables are advanced first, followed by the magnetic-field variables, the pressure(s) and then density.

NIMROD

The NIMROD code solves fluid-based models for magnetized plasma in non-reduced form. Unlike JOREK and M3D-C¹, it directly evolves the components

This is the author's peer reviewed, accepted manuscript. However, the online version of record will be different from this version once it has been copyedited and typeset.

PLEASE CITE THIS ARTICLE AS DOI: 10.1063/1.50037115

of magnetic field \mathbf{B} and flow-velocity \mathbf{v} . A modified form of Faraday's law is used to advance \mathbf{B}

$$\frac{\partial \mathbf{B}}{\partial t} = -\nabla \times \mathbf{E} + \chi_{div} \nabla \nabla \cdot \mathbf{B}, \quad (12)$$

where the second term on the right diffusively corrects any numerical divergence error. In addition, the pressure evolution equation (6) is replaced by an equivalent temperature equation using the ideal gas law $p = nk_B T$ and equation (5).

$$nk_B \frac{\partial T}{\partial t} = -nk_B \mathbf{v} \cdot \nabla T - (\gamma - 1) p \nabla \cdot \mathbf{v} + (\gamma - 1) \nabla \cdot (\boldsymbol{\kappa} \nabla T) + (\gamma - 1) \boldsymbol{\tau} : \nabla \mathbf{v} \quad (13)$$

Although many NIMROD computations use fixed thermal diffusivity coefficients $\chi \sim \kappa/n$, the computations reported here and in Ref. [19] use fixed thermal conductivity coefficients κ_{\parallel} , κ_{\perp} for the benchmarks with JOREK and M3D-C¹. NIMROD's stress tensor is formed with the traceless rate-of-strain tensor, $\boldsymbol{\tau} = \mu[\nabla \mathbf{v} + \nabla \mathbf{v}^T - (2/3)\mathbf{I} \nabla \cdot \mathbf{v}]$.

The VDE modeling uses the thin resistive wall approximation that is described in Ref. [12] to interface with a meshed external numerical vacuum response, where the magnetic representation is the same as in the internal plasma region. The meshed vacuum-field computation is similar to the approach used in M3D-C¹, and the shape of the outer region is chosen to approximate that used in the M3D-C¹ computations [19]. However, NIMROD's thin-wall model interfaces the internal and external regions without resolving the wall's cross section. The equations conserve toroidal magnetic flux over the sum of the two regions, and the normal component of the equilibrium poloidal- \mathbf{B} at the outer surface of external vacuum region is fixed for all time. As noted previously, the cold-wall fixed thermal-conductivity conditions makes extended-MHD computations insensitive to boundary conditions on \mathbf{v} , and we set all components of $\mathbf{v} = 0$ at the resistive wall.

The system is advanced in time with an implicit leapfrog method that, in comparison with fully consistent implicit methods, requires smaller but less computationally intensive steps to achieve the same level of accuracy [28]. Like JOREK, NIMROD expands ϕ -dependent fields in toroidal Fourier harmonics. For the poloidal plane, the expansion is 2D C^0 spectral elements with node spacing based on Legendre polynomials. The underlying polynomial representation is chosen at runtime, and except where noted below, all computations reported here use polynomials of degree 3. The representation does not satisfy the magnetic divergence constraint, identically, but the diffusive error correction term in Eq. (12) is effective at maintaining minimal error with NIMROD's high-order spatial representation [13]. The NIMROD computations also use the stabilization method that is described in Ref. [29] so that the numerical representation reproduces MHD interchange with growth rates increasing to the converged value as resolution is increased.

This is the author's peer reviewed, accepted manuscript. However, the online version of record will be different from this version once it has been copyedited and typeset.

PLEASE CITE THIS ARTICLE AS DOI: 10.1063/5.0037115

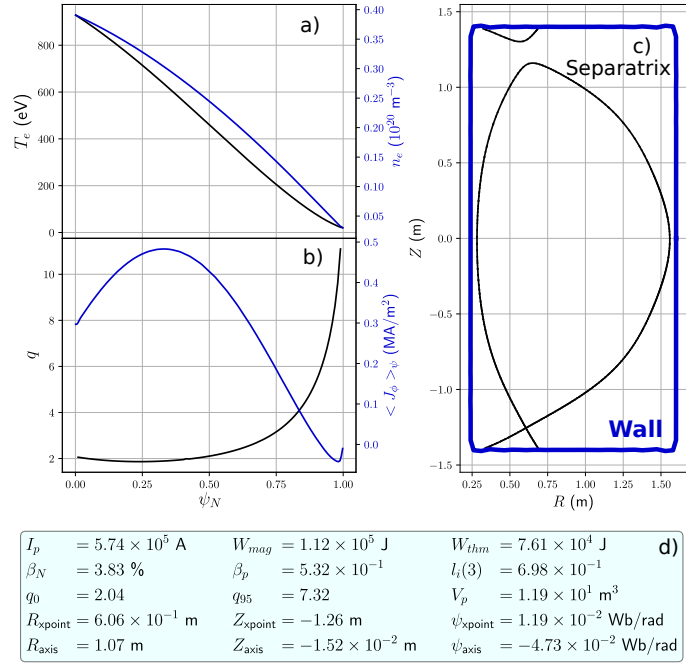


Figure 1: Equilibrium used as initial condition for the benchmark. (a) Temperature and density profiles, (b) safety factor profile and poloidally averaged toroidal current density profile ($\int_{\psi=\text{const}} J_\phi dl / \int_{\psi=\text{const}} dl$) as functions of the normalized poloidal flux. (c) Wall and initial separatrix geometry. (d) List of relevant scalars describing the equilibrium.

3 Benchmark setup

Plasma equilibrium As mentioned in the introduction, the benchmark is a 3D version of the axisymmetric benchmark that was already published for these three codes [19]. The chosen equilibrium is based on an NSTX experimental plasma (discharge #139536 at $t = 309$ ms) that was reconstructed with the EFIT code [30]. The equilibrium profiles, the separatrix and the wall geometries and several scalar quantities describing the equilibrium are shown in figure 1. The temperature profile is calculated from the pressure profile (p) given in the *geqsk* file with the expression $T_e = T_i = 946 \text{ eV } (p/p_{\text{axis}})^{0.6}$. Note that this file is available in the supplementary material of reference [19] as well as the currents and geometry of the poloidal field coils that are needed to compute the free-boundary equilibrium. At the plasma-wall interface, the applied Dirichlet boundary conditions for the temperature and density are $T_{e,\text{edge}} = 14.6 \text{ eV}$ and $n_{e,\text{edge}} = 2.20 \times 10^{18} \text{ m}^{-3}$.

Vacuum vessel For simplicity, a rectangular vacuum vessel is chosen instead of the complicated geometry of the NSTX vacuum vessel (see figure 1 (c)). The rectangular shape is defined by the four vertices ($R = 0.24 \text{ m}, Z = \pm 1.4 \text{ m}$) and ($R = 1.6 \text{ m}, Z = \pm 1.4 \text{ m}$). Note that the wall corners are not exactly sharp in the simulations because Fourier harmonics are used to represent the wall contour. The thickness of the resistive wall is $\Delta_w = 0.015 \text{ m}$ and the wall resistivity is $\eta_w = 3 \times 10^{-5} \Omega \text{ m}$. Where a thin-wall approximation is used, the effective thin wall resistivity η_w/Δ_w is used.

Simulation phases and parameter choice The simulation is divided into two phases: an axisymmetric (2D) run and a 3D run. The values for different parameters common to both phases and specific to each phase are specified in table 2. In the axisymmetric phase, the X-point drifts downwards until the tokamak becomes limited by the lower part of the wall. The end of this phase and the start of the 3D phase is therefore determined by the change of geometry of the LCFS (i.e. it becomes defined by a limiter point instead of the lower X-point). The 2D phase is identical to the initial phase for the non-linear benchmark presented in [19] but with the wall resistivity, plasma resistivity and particle diffusion and heat conduction coefficients increased by a factor of 10. Note that during the full simulation the plasma resistivity is a factor 10 larger than the Spitzer's value. Such an increase was required to reduce the computational cost of the simulations. Although the main goal of this work is not an experimental comparison, the chosen parameters lead to vertical displacements of 1 m in a time-scale of 10 ms, which is similar to the VDEs observed in experiments [31] where such displacements take place within 5-20 ms. In the 2D phase, the heat conduction and particle diffusion coefficients are such that the thermal energy does not decay during the vertical motion. Since the parallel density transport is typically governed by parallel convection, for simplicity the parallel diffusion coefficient is set to be equal to the perpendicular particle diffusion coefficient. In

This is the author's peer reviewed, accepted manuscript. However, the online version of record will be different from this version once it has been copyedited and typeset.

PLEASE CITE THIS ARTICLE AS DOI: 10.1063/5.0037115

Table 2: Physical parameters used for the benchmark case. Note that except for the plasma resistivity, all the coefficients have spatially constant values.

During all phases	
No loop voltage	
No Ohmic heating	
No radiation	
No heating and particle sources	
Ion mass:	$m_i = 2m_{\text{proton}}$
Ion charge:	$Z = 1$
Ion-electron temperature ratio:	$T_e/T_i = 1$
Dynamic viscosity:	$\mu_{\parallel} = \mu_{\perp} = 5.16 \times 10^{-7} \text{ kg (ms)}^{-1}$
Resistivity:	$\eta_{\parallel} = \eta_{\perp} = 1.75 \times 10^{-2} T_e [\text{eV}]^{-3/2} \Omega\text{m}$
During the 2D phase (before the plasma becomes limited)	
Heat conduction coefficients:	$\kappa_{\perp} = 10^{-5} \kappa_{\parallel} = 1.54 \times 10^{19} \text{ (ms)}^{-1}$
Particle diffusion coefficients:	$D_{\perp} = D_{\parallel} = 1.54 \text{ m}^2/\text{s}$
During the 3D phase (after the plasma becomes limited)	
Heat conduction coefficients:	$\kappa_{\perp} = 10^{-5} \kappa_{\parallel} = 2.35 \times 10^{21} \text{ (ms)}^{-1}$
Particle diffusion coefficients:	$D_{\perp} = D_{\parallel} = 40 \text{ m}^2/\text{s}$

the 3D phase, we significantly increase the diffusion/conduction coefficients to smooth the sharp pressure gradients that arise due to the fast shrinking of the LCFS. Although for that phase the diffusion/conduction coefficients do affect the thermal energy decay, it will be shown in the next section that the final collapse of plasma energy is governed by the 3D MHD activity once the magnetic field topology becomes chaotic.

Numerical resolution

In JOREK, a polar grid is used with increased resolution in the region where the plasma becomes limited by the wall. The number of Bézier elements used in the plasma region is 22000, and the number of linear triangular elements to mesh the thin wall is 48000. For the toroidal direction, 11 Fourier modes were used with $n \in [0, 10]$. A resolution scan in the number of Fourier modes is shown in the next section. Time-steps of the order of 5-10 Alfvén times were used during the 2D phase and time steps of 0.1-0.2 Alfvén times were used for the 3D phase.

The M3D-C¹ calculation used the unstructured poloidal plane mesh shown in [19], which has 17424 vertices on each plane, each with 12 degrees of freedom for each scalar field in 3D (6 in 2D). The 3D phase used 16 toroidal Hermite cubic finite elements for each of the triangular vertices. A time step of $\Delta t = 0.5\tau_A$ was used, except for a period of 0.048 ms, starting at time 10.185 ms (1.233 after the start of the 3D) when it was halved to $\Delta t = 0.25\tau_A$, to avoid numerical instability. After this time, an “upwind” second-order toroidal diffusion term

This is the author's peer reviewed, accepted manuscript. However, the online version of record will be different from this version once it has been copyedited and typeset.

PLEASE CITE THIS ARTICLE AS DOI: 10.1063/5.0037115

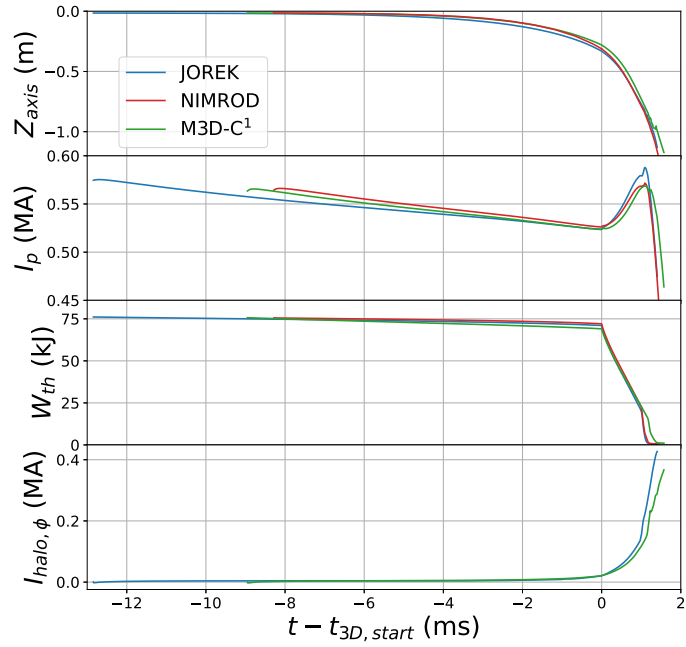


Figure 2: Vertical position of the magnetic axis, plasma current and thermal energy (for all plasma domain) and toroidal halo current as function of time for the three codes. NIMROD's post-processing tools regarding computations that separate the open and the closed field line regions (e.g. $I_{halo,\phi}$) are specially challenging due to the magnetic field representation and are not yet developed for VDEs.

was added to the scalar convection terms for the pressure, density, and magnetic field, equal to $0.125 \times \delta x \times v_\phi$, where $\delta x = 0.4$ m was the approximate distance between toroidal planes.

The NIMROD computations have been run with 39000 quadrilateral bicubic elements for the region inside the resistive wall. The meshing is largely rectangular, but a packed layer of smaller elements is used near the resistive wall and conforms to the curved corners. On average, the bicubic C^0 elements have 9 distinct nodes when taking into account the sharing of element-border nodes. Thus, the inner region has 1 complex degree of freedom per Fourier harmonic for n , T , and each component of \mathbf{v} and \mathbf{B} on 351000 nodes. Like the JOREK computation, toroidal variations are represented with Fourier harmonics $n \in [0, 10]$. Regarding the time-advance, although NIMROD's implicit leapfrog uses implicit advection, the temporal staggering tends to lose accuracy for dynamics if the timestep does not satisfy the Courant-Friedrichs-Lewy (CFL) condition for flow-velocity. Thus, the timestep is adjusted, dynamically, to satisfy this condition. For the most dynamic part of the 3D computations $\Delta t > 0.015\tau_A$, which is hundreds of times larger than an explicit stability limit. In other parts of the 3D evolution, timesteps are more than an order of magnitude larger.

4 Results and analysis

In this section, the simulated case is presented, the results are compared between the three codes, and the physics of the case is analysed. In subsection 4.1, the results for the different phases of the simulation are shown together with a discussion on MHD stability. In subsection 4.2, a resolution scan is performed to demonstrate that the case is sufficiently converged in toroidal resolution. In subsection 4.3, the origin of the wall forces is explored as well as the influence of the parallel heat conductivity, the viscosity and the initial asymmetric perturbations on the results.

4.1 Simulation phases and code comparison

4.1.1 Evolution overview

We compare the vertical position of the magnetic axis, the total toroidal current (including the halo current) and the total thermal energy for the three codes in figure 2. The total toroidal halo current is also shown for JOREK and M3D-C¹. NIMROD's post-processing tools to compute the toroidal halo current have not been developed yet. As expected for the 2D phase ($t' \equiv t - t_{3D,start} < 0$), the level of agreement is similar to the axisymmetric VDE benchmark reported in [19]. The time axis has been shifted so $t' = 0$ when the plasma becomes limited in the 3 codes. As was shown in [19], such synchronization is necessary because the different numerical perturbations initiating the VDE can lead to different time scales even if the growth rates are in good agreement.

This is the author's peer reviewed, accepted manuscript. However, the online version of record will be different from this version once it has been copyedited and typeset.

PLEASE CITE THIS ARTICLE AS DOI: 10.1063/5.0037115

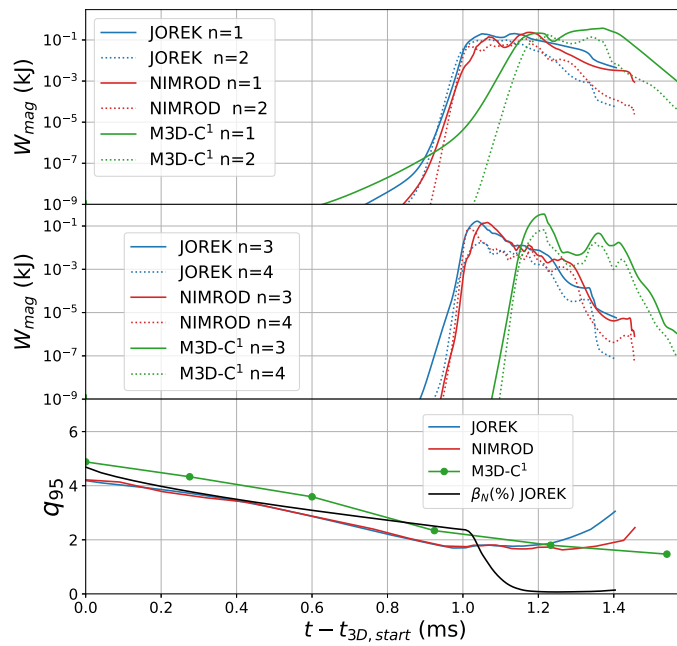


Figure 3: Magnetic energy of the toroidal harmonics $n \in [1, 4]$ in the three codes as a function of time. The time traces of the edge safety factor (q_{95}) and the normalized β_N in JOREK (black curve) are also shown in the bottom figure.

In this benchmark case, the complete thermal quench is induced by the vertical displacement (see next section) and takes place when the plasma volume has decreased by more than a factor of two ($V_p/V_{p0} = 0.26$ at $t' = 1.16$ ms in JOREK). Due to this sequence of events, the case can be classified as a *hot* VDE, which features the largest wall forces observed in experiments. During the 2D phase, the plasma current and the thermal energy do not decay due to the high plasma temperature and the small diffusion/conduction coefficients. The chosen increase of the diffusion/conduction coefficients at the start of the 3D phase leads to a loss of a large fraction of the thermal energy. Note, however, that once 3D MHD instabilities set in, the decay rate of the thermal energy is dominated by the 3D effects and not by the choice of diffusion/conduction coefficients (see β_N time trace in figure 3). Such an increase in the diffusion/conduction coefficients was necessary to prevent the formation of large edge pressure gradients that arise when the plasma volume decreases. Simulations without the increase in the diffusion/conduction coefficients showed that high- n edge localized modes become unstable due to the large gradients. To account for the high toroidal mode numbers adequately, the numerical resolution would have to have been significantly larger and additional terms (e.g. diamagnetic flows terms) would have to have been included in the equations, greatly increasing the complexity of the benchmark. As this work is a benchmark exercise which primarily aims to compare the 3D wall forces (which are observed to be given by low- n mode numbers), the high- n edge localized modes are avoided with the choice of the diffusion/conduction coefficients.

4.1.2 MHD stability

Linear stability calculations were performed at different vertical positions during the 2D phase. All three codes find that the initial equilibrium is unstable to resistive edge instabilities localized at the $q = 3$ and $q = 4$ rational surfaces, but as the equilibrium profiles evolve due to current diffusion and the vertical motion, these modes are stabilized. For example, when performing the stability calculations at $Z_{\text{axis}} = -0.15$ m, corresponding to $t' = -1.4$ ms in figure 3, no instability was found.

In figure 3, the magnetic energies of the dominant toroidal harmonics is shown as a function of time. The magnetic energy of a toroidal harmonic n is defined as $W_{mag}^n \equiv (\int |\mathbf{B}_{pol}^n|^2 dV)/(2\mu_0)$, where \mathbf{B}_{pol}^n is the poloidal magnetic field contribution given by the harmonic n . Figure 3 shows that when q_{95} has dropped to a value around 2, several toroidal harmonics become unstable. Before this time, a weakly growing $n = 1$ mode is observed, which is a mix of an external $m/n = 3/1$ kink mode and a resistive $2/1$ mode. Once the $q = 2$ surface moves into the open field line region, low- n external kink modes become unstable. In figure 4, the mode structures of $n = 1, 2, 3$ are shown, and it can be seen that these instabilities are associated with the $q = 2$ surface since the $2/1$, $4/2$ and $6/3$ structures are dominant. Note that this is consistent with external

This is the author's peer reviewed, accepted manuscript. However, the online version of record will be different from this version once it has been copyedited and typeset.

PLEASE CITE THIS ARTICLE AS DOI: 10.1063/5.0037115

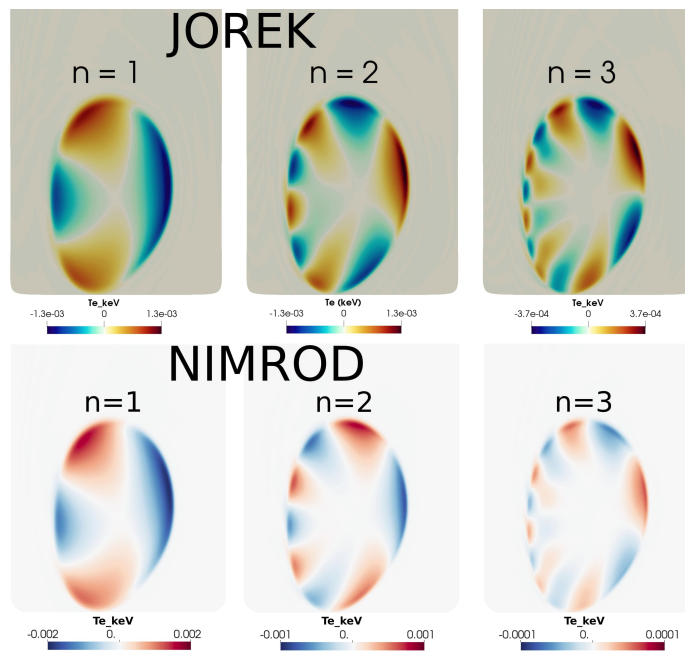


Figure 4: T_e mode structure for the toroidal harmonics with the largest amplitude at $t - t_{3D,start} = 0.93$ ms in JOREK (top row) and at $t - t_{3D,start} = 0.95$ ms in NIMROD (bottom row).

This is the author's peer reviewed, accepted manuscript. However, the online version of record will be different from this version once it has been copyedited and typeset.

PLEASE CITE THIS ARTICLE AS DOI: 10.1063/1.50037115

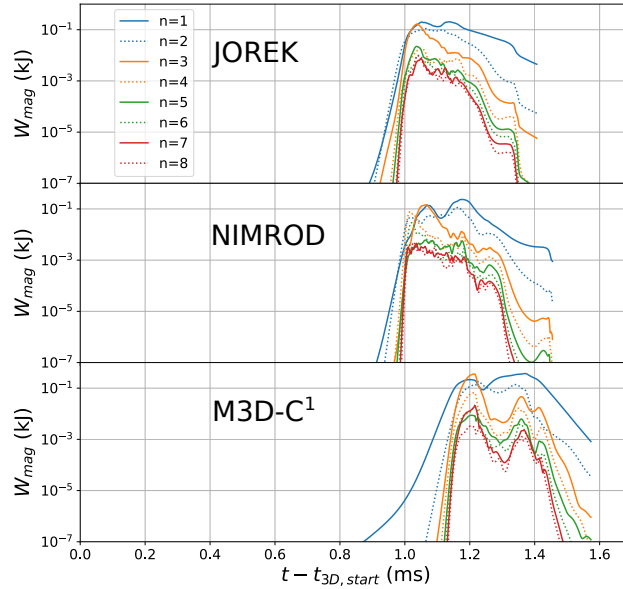


Figure 5: Magnetic energies from the modes $n \in [1, 8]$ in JOREK, NIMROD and M3D-C¹ over time.

kink modes [32] that become unstable when

$$0 < n q_a < m \quad (14)$$

where q_a denotes the cylindrical edge safety factor; in our case $q_a \approx 1.8 < m/n = 2$. Higher- n modes are initially excited by non-linear coupling, and higher n modes remain sub-dominant over most of the evolution (see figure 5).

All three codes show that the plasma becomes very unstable between 0.85-1.10 ms after the plasma becomes limited (see figures 3 and 5). Also, there is agreement on the fact that $n = 1$ is the dominant mode for all but a short period of time. At the beginning of the saturation phase, the $n = 2$ mode is important and moreover, the $n = 3$ mode energy can exceed the $n = 1$ mode energy during short transient phases. Although the mode behavior is similar, differences among the codes of about a factor of 2 are found on the energy saturation level of the dominant $n = 1$ mode (see also figure 7). The growth of the $n = 1$ mode can also be significantly different as can be inferred when comparing $n = 1$ time traces of M3D-C¹ with the other two codes in figure 3.

This is the author's peer reviewed, accepted manuscript. However, the online version of record will be different from this version once it has been copyedited and typeset.

PLEASE CITE THIS ARTICLE AS DOI: 10.1063/5.0037115

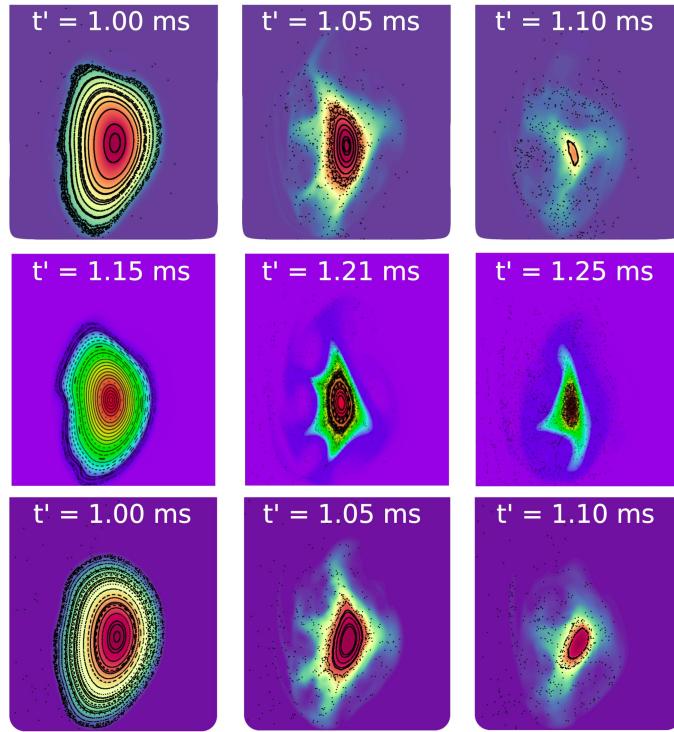


Figure 6: Evolution of the pressure at the plane $\phi = 0$ in JOREK (top), M3D-C¹ (middle) and NIMROD (bottom) in arbitrary units. The pressure plots are overlaid with corresponding Poincare plots showing the magnetic field topology. M. Hoelzl, G.T.A. Huijsmans, S.J.P. Pamela, M. Becoulet, E. Nardon, F.J. Artola, B. Nkonga et al, The JOREK non-linear extended MHD code and applications to large-scale instabilities and their control in magnetically confined fusion plasmas, Nuclear Fusion (accepted), 2021; licensed under a Creative Commons Attribution (CC BY) license.

4.1.3 Thermal quench

The evolution of the thermal pressure during the thermal quench is shown in figure 6. The pressure evolution indicates that the external kink modes grow from the plasma edge and start penetrating into the plasma core. The latter process can be observed in the Poincaré plots also shown in figure 6. The external modes deform the plasma boundary and create an ergodic layer from about $t' = 1.00$ ms onwards. Since these modes grow towards the plasma core, several core plasma regions become areas with open field lines. This can be observed in the zones with low density of points in the Poincaré plots, which imply that the field lines typically intersect the wall before completing a full toroidal turn. The regions with open field lines are the ones losing pressure at a faster rate and therefore they have a lower pressure. This is because the thermal energy is quickly lost along the magnetic field lines due to the fast parallel heat conduction. The fast loss of thermal energy is sensitive to the magnetic topology evolution, and in the simulations, it takes 0.14 ms in JOREK, 0.24 ms in M3D-C¹ and 0.18 ms in NIMROD. Therefore maximum differences of a factor of about 1.7 are found on the obtained duration of the thermal quench. This range of times is consistent with NSTX disruptions where the loss of core confinement occurs in a time-scale of ~ 0.2 ms [33].

4.1.4 Wall forces

In JOREK and NIMROD the total wall force is calculated with the expression given by [34]

$$\mathbf{F} \equiv \int_{wall} \mathbf{J} \times \mathbf{B} dV = \frac{1}{\mu_0} \oint_{wall+} \left((\mathbf{B} \cdot \mathbf{n})\mathbf{B} - \frac{B^2}{2}\mathbf{n} \right) dS \quad (15)$$

where \mathbf{n} is the normal vector to a closed toroidal surface enclosing the wall. The force in M3D-C¹ is calculated directly with the integral over the vessel elements ($\int \mathbf{J} \times \mathbf{B} dV$). In figure 7, the total vertical force, the total horizontal force and the toroidal phase of the horizontal force in the three codes are shown as a function of time (including the magnetic energy of the $n = 1$ mode for reference). The vertical force (F_z) is already significant before the onset of the non-axisymmetric instabilities, indicating that it is dominated by 2D effects. The magnitude and the time evolution of this force are in fair agreement among the codes. The maximum horizontal force $F_h = \sqrt{F_x^2 + F_y^2}$ among the codes varies from 1.3 kN to 3.5 kN and the time of the peak value varies by 0.2 ms. Although the horizontal force F_h appears together with the rise of the $n = 1$ magnetic energy, their correlation is not obvious. For example, JOREK shows a horizontal force a factor approximately 2.7 larger than NIMROD although the maximum $n = 1$ magnetic energy is similar. The toroidal phase of the horizontal force indicates that F_h is not able to complete a full toroidal turn in any of the codes after the thermal quench, showing that the force is rotating only very slowly during the phase when asymmetric forces develop.

This is the author's peer reviewed, accepted manuscript. However, the online version of record will be different from this version once it has been copyedited and typeset.

PLEASE CITE THIS ARTICLE AS DOI: 10.1063/5.0037115

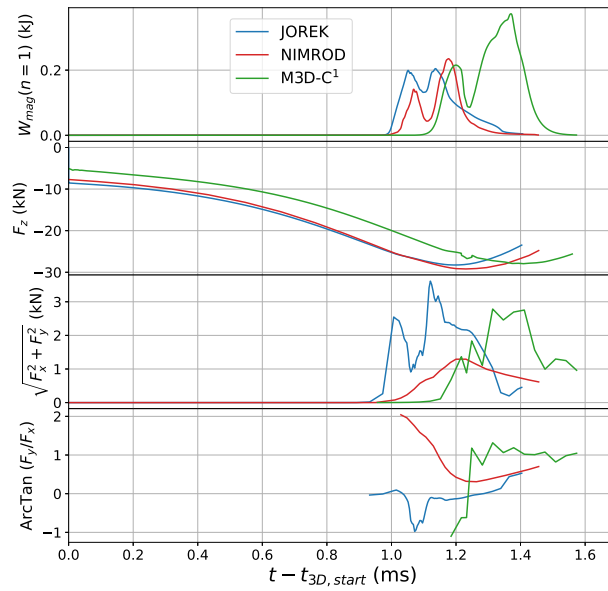


Figure 7: Time traces of the $n = 1$ magnetic energy, the vertical force, the total horizontal force and the toroidal phase of the total horizontal force. M. Hoelzl, G.T.A. Huijsmans, S.J.P. Pamela, M. Becoulet, E. Nardon, F.J. Artola, B. Nkonga et al, The JOREK non-linear extended MHD code and applications to large-scale instabilities and their control in magnetically confined fusion plasmas, Nuclear Fusion (accepted), 2021; licensed under a Creative Commons Attribution (CC BY) license.

This is the author's peer reviewed, accepted manuscript. However, the online version of record will be different from this version once it has been copyedited and typeset.

PLEASE CITE THIS ARTICLE AS DOI: 10.1063/5.0037115

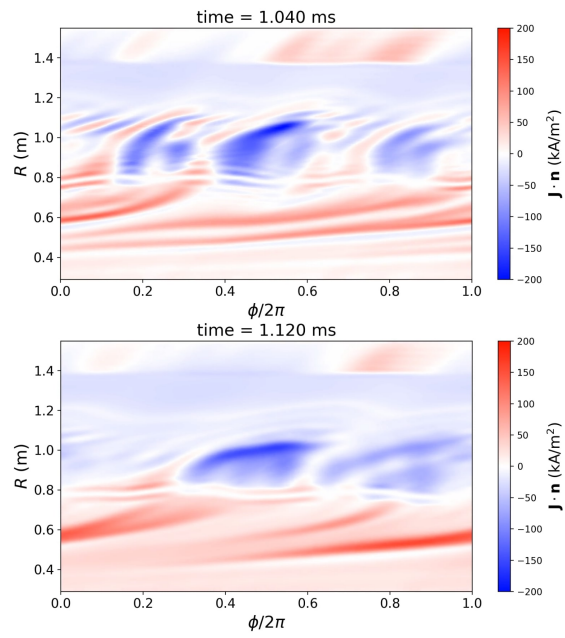


Figure 8: Normal current density at the bottom side of the rectangular wall ($Z = -1.4$ m) as function of the toroidal angle ϕ for two times during the thermal quench in JOREK.

This is the author's peer reviewed, accepted manuscript. However, the online version of record will be different from this version once it has been copyedited and typeset.

PLEASE CITE THIS ARTICLE AS DOI: 10.1063/1.50037115

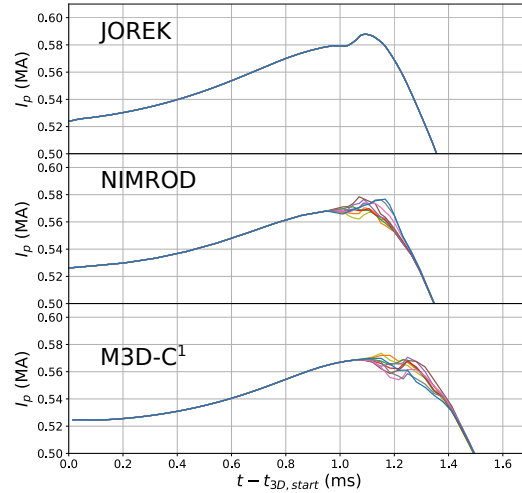


Figure 9: Total toroidal current (I_p) computed at 10 equidistant poloidal planes with $\phi = 2\pi k/10$ and $k = 0, 1..9$ in JOREK, NIMROD and M3D-C¹. Note that for JOREK the curves are indistinguishable and no toroidal current asymmetry is found.

4.1.5 3D halo currents

One of the main features that these codes offer is the capability to calculate self-consistent 3D halo currents. In figure 8, the current density normal to the wall is shown as a function of the toroidal angle (ϕ) and the R coordinate on the bottom side of the rectangular wall ($Z = -1.4$ m). At time $t = 1.04$ ms filamentary structures appear implying that the $n > 1$ harmonics are important to determine the 3D halo current. In particular, a strong $n = 3$ mode structure is present in the normal current density as this mode has the largest energy at this time in JOREK (see figure 5). Note that across the limiter point ($R \sim 0.8$ m), the current filaments are strong enough to change the sign of the $n = 0$ current density. Later, when the horizontal force reaches a maximum ($t = 1.12$ ms), the halo currents show a dominant $n = 1$ structure. Although NIMROD and M3D-C¹ plots are not displayed, they qualitatively show the same behavior.

4.1.6 Toroidal plasma current asymmetries

Asymmetric VDEs are often characterized by the toroidal asymmetries of the plasma current (I_p). Experimental evidence shows that when measuring I_p at

different toroidal locations [35] (e.g. using Rogowski coils at different toroidal sectors), VDEs can cause asymmetries on the plasma current of the order of 10-20% ($\Delta I_p/I_p$). In figure 9, the plasma current is computed at 10 equidistant poloidal planes ($\phi = 2\pi k/10$ with $k = 0, 1..9$) in the three codes. In NIMROD, the maximum I_p asymmetries are of the order of 1.5-2%, in M3D-C¹ they are on the order of 1-1.4%, and in JOREK they are smaller than 0.01%.

Although it does not seem to affect key quantities such as the wall forces, the fact that JOREK shows no I_p asymmetries has been investigated as part of this work. The coupling with the resistive wall code [18] does not include the effect of halo currents. This implies that there is a jump of the normal current density across the plasma-wall interface. Although the normal current density arriving to the interface is finite ($\mathbf{J} \cdot \mathbf{n}|_{\text{in}} \neq 0$) as shown in figure 8, the normal current density leaving the interface is zero ($\mathbf{J} \cdot \mathbf{n}|_{\text{out}} = 0$). Due to $\nabla \cdot \mathbf{J} = 0$, the fact that $\mathbf{J} \cdot \mathbf{n}|_{\text{out}} = 0$ automatically implies that $\partial_\phi I_p = 0$. The jump on the normal current density is compensated by tangential surface currents flowing on the JOREK's plasma-wall interface that are hidden in the formalism. These currents are not force-free, and therefore, they produce an important contribution to the wall forces (i.e. the halo current contribution).

4.2 Resolution scans

The JOREK simulation was repeated with a larger number of toroidal harmonics, $n \in [0, 20]$ instead of $n \in [0, 10]$. The results are shown in figure 10, which indicate that high- n mode numbers do not significantly change the evolution of the important figures of merit (such as the plasma current, the thermal energy and the wall forces). NIMROD simulations with $n \in [0, 10]$ and $n \in [0, 21]$ are also shown in the figure. They also indicate convergence with respect to toroidal representation, but we note that this comparison had been completed with resistivity depending only on the $n = 0$ component of T and with parallel viscosity that is a factor of 100 larger than the scalar viscosity value. While another NIMROD computation with $n \in [0, 21]$ and having all the parameters of the three-code comparison shows a similar level of convergence for the NIMROD computations well into the thermal-quench phase, it has not been run sufficiently far to display. We also observe that although the wall force converges with toroidal resolution within each code, the force does not converge between codes.

A check on poloidal resolution is most easily accomplished with NIMROD, where the degree of the spectral-element polynomials can be changed while keeping the same mesh of elements. A lower-resolution computation of the 3D phase with biquadratic elements (156,000 nodes) and the parameters of section 4.1 produces a peak $n = 1$ energy that is 37% larger but a peak horizontal force that is only 2.2% larger than the bicubic results.

This is the author's peer reviewed, accepted manuscript. However, the online version of record will be different from this version once it has been copyedited and typeset.

PLEASE CITE THIS ARTICLE AS DOI: 10.1063/1.50037115

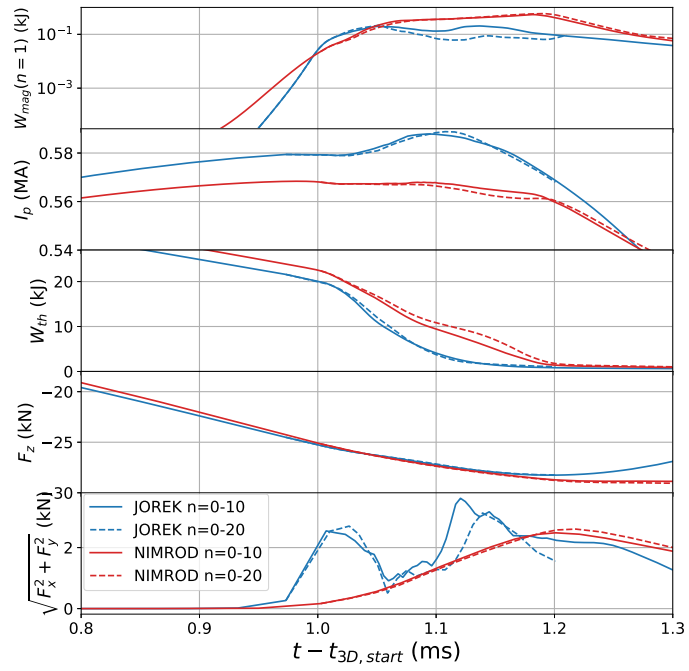


Figure 10: Magnetic energy of the $n = 1$ mode, plasma current, thermal energy, vertical and horizontal force for two JOREK and NIMROD runs with different number of toroidal harmonics. The NIMROD computations shown here have been run with 2D resistivity and increased parallel viscosity—see the text.

This is the author's peer reviewed, accepted manuscript. However, the online version of record will be different from this version once it has been copyedited and typeset.

PLEASE CITE THIS ARTICLE AS DOI: 10.1063/5.0037115

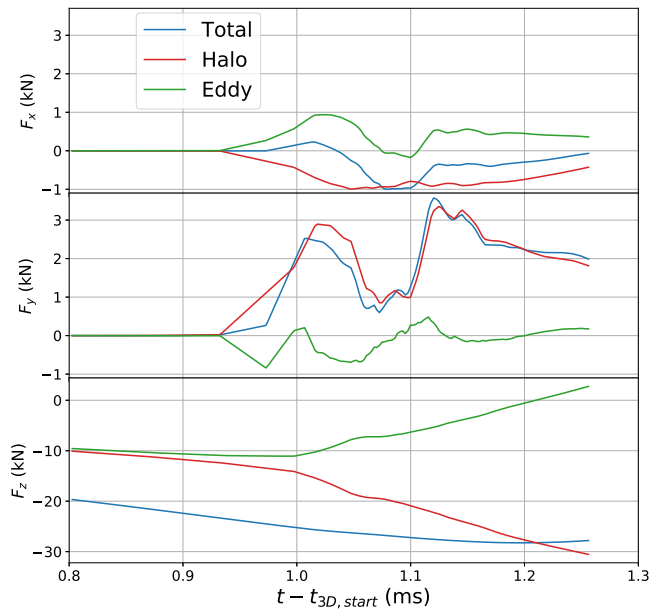


Figure 11: Cartesian components of the total wall force in the JOREK simulation. The different legends denote the total wall force and the separate contributions of halo and eddy currents.

4.3 Additional physics studies

4.3.1 Origin of the wall forces

In this section, we study the origin of the wall forces with JOREK. As it was indicated in 4.1.6, normal electric currents do not enter the resistive wall ($\mathbf{J} \cdot \mathbf{n}|_{wall} = 0$) and, instead, flow along the plasma-wall interface in JOREK. In this sense, the plasma domain's boundary is not force-free. This feature allows one to clearly separate between halo and eddy currents. Since only eddy currents flow on the JOREK-STARWALL wall, the wall force caused by eddy currents can be computed with

$$\mathbf{F}_{eddy} = \mathbf{F} - \mathbf{F}_{halo} = \oint_{wall+} \mathbf{f} dS - \oint_{wall-} \mathbf{f} dS \quad (16)$$

where $\mathbf{f} \equiv [(\mathbf{B} \cdot \mathbf{n})\mathbf{B} - \mathbf{n}B^2/2] / \mu_0$ is the magnetic stress tensor projected in the normal direction to the wall. We have used the previous formula to calculate the different contributions to the total wall force as shown in figure 11. Although the eddy currents have a significant contribution, the horizontal force (mainly given by F_y) is governed by halo currents. Moreover, the eddy current force is in the opposite direction with respect to the halo current force, and thus it reduces the total horizontal force. In the case of the vertical force, both halo and eddy currents have a similar contribution before the thermal quench. After the thermal quench, the plasma resistivity is significantly increased due to the drop in the plasma temperature. As a consequence, the core plasma current decays and it induces halo currents in the open field line region, which has appreciable temperature due to the imposed B.C. $T_{e,edge} = 14.6$ eV. As the induction of halo current and its associated wall force increases at a higher rate than the total wall force (which varies on the resistive wall time), the eddy current contribution to the total force must decrease as observed in [36]. As a general conclusion for both forces, the JOREK simulation shows that the maximum forces are due to halo currents.

4.3.2 Effect of parallel heat conductivity and viscosity

In this subsection a case with increased parallel thermal conductivity and a case with decreased viscosity are presented. The results shown in figure 12 indicate that the viscosity plays a minor role for the evolution of I_p and of the thermal energy. Although not large, reducing the viscosity produces perceptible effects on the wall force. Increasing the parallel conductivity produces a more dramatic effect on the results. The dynamics become faster and the loss of thermal energy takes 0.043 ms instead of 0.14 ms. Although it is expected that the increase of κ_{\parallel} leads to a faster thermal quench (the heat is conducted faster along the open field lines), it is not clear that the thermal quench time has a linear dependence with the parallel heat conduction coefficient due to the effect of the thermal pressure on the field line topology. In this case when κ_{\parallel} was increased by a factor of 10 the thermal quench time was reduced by a factor of 3. The magnitude of the

This is the author's peer reviewed, accepted manuscript. However, the online version of record will be different from this version once it has been copyedited and typeset.

PLEASE CITE THIS ARTICLE AS DOI: 10.1063/1.50037115

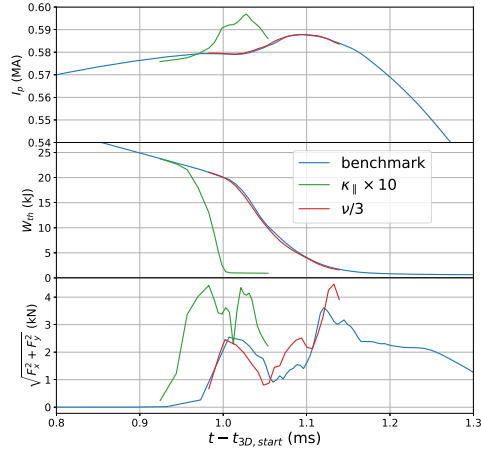


Figure 12: Results from a JOREK computation run with 10 times larger parallel thermal conductivity (green curves) and from another run with 3 times smaller viscosity (red curves). The baseline benchmark case (blue curves) is also plotted for reference. The quantities shown are the total toroidal current (I_p), the total thermal energy (W_{th}) and the total horizontal wall force. The cases represented by the green and red curves were not run for the entire time span to reduce computational costs.

horizontal force is significantly larger during the thermal quench although the maximum forces measured are similar (3.5-4.2 kN).

4.3.3 Effect of 3D perturbation amplitude

The three codes use different asymmetric perturbations at the start of the 3D phase to excite $n \geq 1$ activity. JOREK and NIMROD use spatially smooth perturbations, whereas M3D-C¹ uses mesh-scale random noise. Thus, even with perturbations of roughly the same amplitude, the projections onto any growing modes differ. Moreover, initial asymmetric perturbations of steady symmetric fields are typically considered arbitrary in MHD computations, as long as they are sufficiently small. In this application, however, the VDE continually changes the symmetric state, hence the response of the asymmetries. To investigate how the perturbations affect the outcome of our simulations, the NIMROD and JOREK computations have been repeated with amplitudes of the perturbations increased, relative to the computations described in the preceding sections.

Figure 13 compares the evolution of the plasma current, thermal energy,

This is the author's peer reviewed, accepted manuscript. However, the online version of record will be different from this version once it has been copyedited and typeset.

PLEASE CITE THIS ARTICLE AS DOI: 10.1063/1.50037115

$n = 1$ and 2 magnetic energies, and the magnitude of horizontal force from NIMROD computations with perturbations at the start of the 3D phase that differ in amplitude by 1000. The small-perturbation case is the one described throughout section 4.1. The comparisons show both qualitative and quantitative differences in the results. With the large perturbation, the (2,1) mode reaches large amplitude before other toroidal harmonics become unstable. Therefore, the MHD activity is dominated by the (2,1) mode and its helical harmonics, unlike the small-perturbation case, which shows multi-helicity activity. This is evident in figure 14, which shows pressure in the $\phi = 0$ plane, at 1.01 ms of the large-perturbation case and at 1.05 ms of the small-perturbation case. JOREK results also show the dominance of the (2,1) mode structure instead of the multi-helicity activity when starting with large $n \geq 1$ perturbation amplitudes, as confirmed by the comparison in figure 14. Apart from the timing of the thermal quench, the quantitative impacts of starting from the large perturbation in the NIMROD computations include peak $n = 1$ magnetic fluctuation energy being 7 times larger, the thermal quench taking 0.12 ms instead of 0.18 ms, and the peak magnitude of the horizontal force being 80% larger.

We note that both sets of perturbations at the start of the 3D phase are small enough to avoid immediate nonlinear effects. The early-time growth rates of $\gamma\tau_A \approx 6 \times 10^{-3}$ for the $n = 1$ mode differ by $\approx 0.1\%$. Using this growth rate with $\tau_A = 1.2 \mu\text{s}$, we estimate that in the absence of the VDE evolution, even the large perturbation case would not reach saturation amplitude until at least 2.5 ms after the start of the 3D phase. The increasing growth rates with the VDE evolution and the large destabilization that occurs when q_{95} decreases below 2 after 0.85 ms make the timing of the disruption somewhat insensitive to the initial perturbation. Nonetheless, our results show that the treatment of asymmetric perturbations can be an important consideration for asymmetric VDE computations. In physics studies, 3D perturbations would normally be present in a self-consistent way either arising from pre-existing MHD like neoclassical tearing modes and/or the injected material from a disruption mitigation system such that a dependency on arbitrary initial conditions is not present.

5 Conclusions

A benchmark case for a 3-dimensional vertical displacement event in an NSTX plasma has been presented. The case has been run with the MHD codes JOREK, M3D-C¹ and NIMROD for a 3-code comparison. The full run is divided into two phases: an axisymmetric run (2D) and a 3D run. Good agreement was found during the 2D phase for several figures of merit such as the plasma current, the thermal energy and the vertical position (as it was already checked in [19]). The 3D phase was initiated when the plasma became limited by the wall instead of the lower X-point.

In spite of pronounced differences between physics models and numerical methods, a wide range of 3D features predicted by the three codes are in qualitative agreement. For example, the three codes predict that the plasma becomes

This is the author's peer reviewed, accepted manuscript. However, the online version of record will be different from this version once it has been copyedited and typeset.
 PLEASE CITE THIS ARTICLE AS DOI: 10.1063/1.50037115

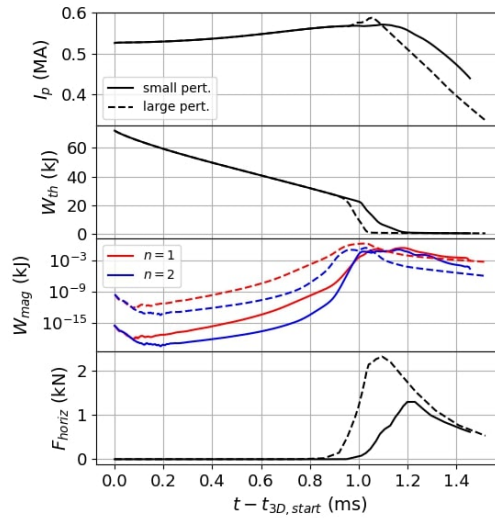


Figure 13: Comparison of plasma current, thermal energy, magnetic perturbation energy, and horizontal force from NIMROD computations with perturbations at the start of the 3D phase differing by 1000 in amplitude. The small-perturbation case is the one described in preceding sections.

This is the author's peer reviewed, accepted manuscript. However, the online version of record will be different from this version once it has been copyedited and typeset.
 PLEASE CITE THIS ARTICLE AS DOI: 10.1063/1.50037115

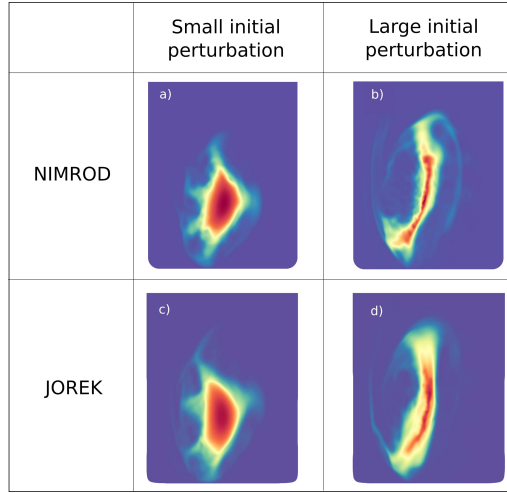


Figure 14: Comparison of pressures from NIMROD and JOEK computations with small-amplitude (a,c) and large-amplitude (b,d) $n \geq 1$ perturbations, just prior to initial saturation of the (2,1) mode in each case. The plots display the $\phi = 0$ plane except for figure (d) where $\phi = 1.12\pi$ was chosen to compare the 3D plasma state in the same phase.

This is the author's peer reviewed, accepted manuscript. However, the online version of record will be different from this version once it has been copyedited and typeset.

PLEASE CITE THIS ARTICLE AS DOI: 10.1063/1.50037115

unstable to low- n external kink modes 0.85 - 1.1 ms after the plasma becomes limited by the wall. This happens when the q value at the last closed flux surface falls below 2. The growth of these modes lead to the stochastization of the magnetic field lines causing a loss of thermal energy on a time-scale of 0.14 ms in JOREK, 0.24 ms in M3D-C¹ and 0.18 ms in NIMROD. During the thermal quench, similar filamentary structures can be observed in the pressure plots for the three codes (see figure 6). The total vertical force on the wall is in excellent agreement between the codes, and they all find the predicted maximum 3D horizontal force to be an order of magnitude smaller, in the range of 1.3-3.5 kN. Moreover the horizontal force is only slowly rotating (less than one toroidal turn) after the thermal quench. Additional JOREK studies reveal that when the forces reach their maximum, they originate from halo currents.

The halo currents show mid- n filamentary patterns with large enough amplitude to reverse the sign of the normal current ($\mathbf{J} \cdot \mathbf{n}$) given by the $n = 0$ component (see figure 8). At the moment when the force reaches its maximum, the $n = 1$ component becomes dominant. A scan in the number of Fourier harmonics used indicated that the wall force is sufficiently converged in toroidal resolution $n \in [0, 10]$ to provide an adequate description of the modeled physics processes. Additional simulations show that the wall forces are weakly dependent on viscosity and that the choice of the parallel heat conductivity strongly influences the duration of the thermal quench but not the magnitude of the forces.

The nature of VDEs implies that the entire profile and its stability properties evolve over the course of the event. We have found that this leads to both qualitative and quantitative sensitivities to the asymmetric perturbations that are applied to excite $n \geq 1$ activity. In this case, large perturbations at the start of the 3D phase lead to (2,1)-dominated saturation before other modes are strongly destabilized, whereas small perturbations leave the (2,1) sufficiently small that saturation is a multi-helicity process. This type of sensitivity differs from other nonlinear tokamak stability problems, where the background profile is held relatively constant. The NIMROD and JOREK results that test sensitivity to initial perturbation show the same trends, but we infer that such details at the start of the 3D phase may contribute to the quantitative discrepancies in the peak fluctuation energy and horizontal force that occur much later in the VDE evolution. For physics studies outside this benchmark scenario, initial 3D perturbations would be given by pre-existing MHD activity or disruption mitigation such that the results do not depend on somewhat arbitrary initial conditions.

Finally, important differences were observed for the toroidal asymmetry of I_p . The present plasma-wall coupling [24] of the JOREK's model is not able to reproduce any I_p asymmetries, which are of the order of a few per cent in NIMROD and M3D-C¹. Nevertheless, the ansatz-based reduced MHD model is able to capture many of the 3D features correctly, even for the large β spherical tokamak plasma considered here.

This is the author's peer reviewed, accepted manuscript. However, the online version of record will be different from this version once it has been copyedited and typeset.

PLEASE CITE THIS ARTICLE AS DOI: 10.1063/5.0037115

The consistent results among the three codes bring confidence for their use in disruption studies. Moreover, important post-processing diagnostics were developed and validated during this work. Future efforts will focus on benchmarks of more complex simulations including Ohmic heating, radiation, realistic Spitzer resistivity, impurity injection, neutral particles and more advanced boundary conditions. We note that in order to have predictive capabilities and to validate the model predictions against the experiment, so that they can be applied with confidence to ITER, these additional effects need to be included (especially radiation and Ohmic heating). Nonetheless, the present work is an important step towards realistic simulations.

Acknowledgments

This work was supported by the ITER Monaco Fellowship Programme. The authors acknowledge access to the EUROfusion High Performance Computer (Marconi-Fusion) through EUROfusion funding to perform the presented simulations.

ITER is the Nuclear Facility INB no. 174. This paper explores physics processes during the plasma operation of the tokamak when disruptions take place; nevertheless the nuclear operator is not constrained by the results presented here. The views and opinions expressed herein do not necessarily reflect those of the ITER Organization.

This work was supported by US DOE Contracts No. DE-AC02-09CH11466 and No. DE-SC0018001, and the SciDAC Center for Tokamak Transient Simulations. Some of the computations presented in this report used resources of the National Energy Research Scientific Computing Center (NERSC), a U.S. Department of Energy Office of Science User Facility operated under Contract No. DE-AC02-05CH11231. The support from the EUROfusion Researcher Fellowship programme under the task agreement WP19-20-ERG-DIFFER/Krebs is gratefully acknowledged. Part of this work has been carried out within the framework of the EUROfusion Consortium and has received funding from the Euratom research and training programme 2014-2018 and 2019-2020 under grant agreement No 633053. The views and opinions expressed herein do not necessarily reflect those of the European Commission.

The authors would like to thank Guido Huijsmans and Michael Lehnen for fruitful discussions about the contents of this article.

Data availability

The data that support the findings of this study are available from the corresponding author upon reasonable request.

This is the author's peer reviewed, accepted manuscript. However, the online version of record will be different from this version once it has been copyedited and typeset.

PLEASE CITE THIS ARTICLE AS DOI: 10.1063/5.0037115

References

- [1] Y Gribov, D Humphreys, K Kajiwara, E.A Lazarus, J.B Lister, T Ozeki, A Portone, M Shimada, A.C.C Sips, and J.C Wesley. Chapter 8: Plasma operation and control. *Nuclear Fusion*, 47(6):S385–S403, jun 2007. doi:[10.1088/0029-5515/47/6/s08](https://doi.org/10.1088/0029-5515/47/6/s08).
- [2] T.C Hender, J.C Wesley, J Bialek, A Bondeson, A.H Boozer, R.J Buttery, A Garofalo, T.P Goodman, R.S Granetz, Y Gribov, O Gruber, M Gryaznevich, G Giruzzi, S Günter, N Hayashi, P Helander, C.C Hegna, D.F Howell, D.A Humphreys, G.T.A Huysmans, A.W Hyatt, A Isayama, S.C Jardin, Y Kawano, A Kellman, C Kessel, H.R Koslowski, R.J. La Haye, E Lazzaro, Y.Q Liu, V Lukash, J Manickam, S Medvedev, V Mertens, S.V Mirnov, Y Nakamura, G Navratil, M Okabayashi, T Ozeki, R Paccagnella, G Pautasso, F Porcelli, V.D Pustovitov, V Riccardo, M Sato, O Sauter, M.J Schaffer, M Shimada, P Sonato, E.J Strait, M Sugihara, M Takechi, A.D Turnbull, E Westerhof, D.G Whyte, R Yoshino, H Zohm, Disruption the ITPA MHD, and Magnet Group. Chapter 3: MHD stability, operational limits and disruptions. *Nuclear Fusion*, 47(6):S128–S202, jun 2007. doi:[10.1088/0029-5515/47/6/s03](https://doi.org/10.1088/0029-5515/47/6/s03).
- [3] Tyge Schioler, Christian Bachmann, Giuseppe Mazzone, and Giulio San-nazzaro. Dynamic response of the ITER tokamak during asymmetric VDEs. *Fusion Engineering and Design*, 86(9-11):1963–1966, 2011. doi:[10.1016/j.fusengdes.2010.11.016](https://doi.org/10.1016/j.fusengdes.2010.11.016).
- [4] SN Gerasimov, TC Hender, J Morris, V Riccardo, LE Zakharov, and JET EFDA Contributors. Plasma current asymmetries during disruptions in JET. *Nuclear Fusion*, 54(7):073009, 2014. doi:[10.1088/0029-5515/54/7/073009](https://doi.org/10.1088/0029-5515/54/7/073009).
- [5] RR Khayrutdinov and VE Lukash. Studies of plasma equilibrium and transport in a tokamak fusion device with the inverse-variable technique. *Journal of Computational Physics*, 109(2):193–201, 1993. doi:[10.1006/jcph.1993.1211](https://doi.org/10.1006/jcph.1993.1211).
- [6] Stephen C Jardin, N Pomphrey, and J Delucia. Dynamic modeling of transport and positional control of tokamaks. *Journal of computational Physics*, 66(2):481–507, 1986. doi:[10.2172/5139994](https://doi.org/10.2172/5139994).
- [7] F Villone, L Barbato, S Mastrostefano, and S Ventre. Coupling of non-linear axisymmetric plasma evolution with three-dimensional volumetric conductors. *Plasma Physics and Controlled Fusion*, 55(9):095008, jul 2013. doi:[10.1088/0741-3335/55/9/095008](https://doi.org/10.1088/0741-3335/55/9/095008).
- [8] FJ Artola, K Lackner, GTA Huijsmans, M Hoelzl, E Nardon, and A Loarte. Understanding the reduction of the edge safety factor during hot VDEs and fast edge cooling events. *Physics of Plasmas*, 27(3):032501, 2020. doi:[10.1063/1.5140230](https://doi.org/10.1063/1.5140230).

This is the author's peer reviewed, accepted manuscript. However, the online version of record will be different from this version once it has been copyedited and typeset.

PLEASE CITE THIS ARTICLE AS DOI: 10.1063/5.0037115

- [9] H Strauss, R Paccagnella, J Breslau, L Sugiyama, and S Jardin. Sideways wall force produced during tokamak disruptions. *Nuclear Fusion*, 53(7):073018, 2013. doi:<https://doi.org/10.1088/0029-5515/53/7/073018>.
- [10] H Strauss. Reduction of asymmetric wall force in ITER disruptions with fast current quench. *Physics of Plasmas*, 25(2):020702, 2018. doi:[10.1063/1.5008813](https://doi.org/10.1063/1.5008813).
- [11] W. Park, E. V. Belova, G. Y. Fu, X. Z. Tang, H. R. Strauss, and L. E. Sugiyama. Plasma simulation studies using multilevel physics models. *Physics of Plasmas*, 6(5):1796–1803, 1999. doi:[10.1063/1.873437](https://doi.org/10.1063/1.873437).
- [12] C R Sovinec and K J Bunkers. Effects of asymmetries in computations of forced vertical displacement events. *Plasma Physics and Controlled Fusion*, 61(2):024003, 2019. doi:[10.1088/1361-6587/aaf124](https://doi.org/10.1088/1361-6587/aaf124).
- [13] C.R. Sovinec, A.H. Glasser, T.A. Gianakon, D.C. Barnes, R.A. Nebel, S.E. Kruger, D.D. Schnack, S.J. Plimpton, A. Tarditi, M.S. Chu, and the NIMROD Team. Nonlinear magnetohydrodynamics simulation using high-order finite elements. *Journal of Computational Physics*, 195(1):355 – 386, 2004. doi:[10.1016/j.jcp.2003.10.004](https://doi.org/10.1016/j.jcp.2003.10.004).
- [14] D Pfefferlé, N Ferraro, SC Jardin, I Krebs, and A Bhattacharjee. Modelling of NSTX hot vertical displacement events using M3D-C1. *Physics of Plasmas*, 25(5):056106, 2018. doi:[10.1063/1.5016348](https://doi.org/10.1063/1.5016348).
- [15] N. M. Ferraro, S. C. Jardin, L. L. Lao, M. S. Shephard, and F. Zhang. Multi-region approach to free-boundary three-dimensional tokamak equilibria and resistive wall instabilities. *Physics of Plasmas*, 23(5):056114, 2016. doi:[10.1063/1.4948722](https://doi.org/10.1063/1.4948722).
- [16] F.J. Artola Such. *FREE-BOUNDARY SIMULATIONS OF MHD PLASMA INSTABILITIES IN TOKAMAKS*. Theses, Université Aix Marseille, November 2018. URL <https://tel.archives-ouvertes.fr/tel-02012234>.
- [17] GTA Huysmans and O Czarny. MHD stability in X-point geometry: simulation of elms. *Nuclear fusion*, 47(7):659, 2007. doi:[10.1088/0029-5515/47/7/016](https://doi.org/10.1088/0029-5515/47/7/016).
- [18] M Hölzl, P Merkel, GTA Huysmans, E Nardon, E Strumberger, R McAdams, I Chapman, S Günter, and K Lackner. Coupling JOREK and STARWALL codes for non-linear resistive-wall simulations. In *Journal of Physics: Conference Series*, volume 401, page 012010. IOP Publishing, 2012. doi:[10.1088/1742-6596/401/1/012010](https://doi.org/10.1088/1742-6596/401/1/012010).
- [19] I Krebs, FJ Artola, CR Sovinec, SC Jardin, KJ Bunkers, M Hoelzl, and NM Ferraro. Axisymmetric simulations of vertical displacement events in tokamaks: A benchmark of M3D-C1, NIMROD, and JOREK. *Physics of Plasmas*, 27(2):022505, 2020. doi:[10.1063/1.5127664](https://doi.org/10.1063/1.5127664).

This is the author's peer reviewed, accepted manuscript. However, the online version of record will be different from this version once it has been copyedited and typeset.

PLEASE CITE THIS ARTICLE AS DOI: 10.1063/5.0037115

- [20] K. J. Bunkers and C. R. Sovinec. The influence of boundary and edge-plasma modeling in computations of axisymmetric vertical displacement. *Physics of Plasmas*, 27:112505, 2020. doi:[10.1063/5.0023604](https://doi.org/10.1063/5.0023604).
- [21] F.J. Artola, A. Loarte, E. Matveeva, J. Havlicek, T. Markovic, J. Adamek, J. Cavalier, L. Kripner, G.T.A. Huijsmans, M. Lehnen, M. Hoelzl, JOREK team, and COMPASS team. Simulations of COMPASS Vertical Displacement Events with a self-consistent model for halo currents including neutrals and sheath boundary conditions. In *Proceedings of the Joint Varenna – Lausanne International Workshop on Theory of Fusion Plasmas, 12-16 October 2020, Lausanne, Switzerland*, 2020. preprint at <https://arxiv.org/abs/2101.01755>.
- [22] JW Haverkort, Hugo J de Blank, GTA Huysmans, J Pratt, and Barry Koren. Implementation of the full viscoresistive magnetohydrodynamic equations in a nonlinear finite element code. *Journal of Computational Physics*, 316:281–302, 2016. doi:[10.1016/j.jcp.2016.04.007](https://doi.org/10.1016/j.jcp.2016.04.007).
- [23] S. J. P. Pamela, A. Bhole, G. T. A. Huijsmans, B. Nkonga, M. Hoelzl, I. Krebs, and E. Strumberger. Extended full-mhd simulation of non-linear instabilities in tokamak plasmas. *Physics of Plasmas*, 27(10):102510, 2020. doi:[10.1063/5.0018208](https://doi.org/10.1063/5.0018208). URL <https://doi.org/10.1063/5.0018208>.
- [24] M. Hoelzl, G.T.A. Huijsmans, S.J.P. Pamela, M. Becoulet, E. Nardon, F.J. Artola, B. Nkonga, C.V. Atanasiu, V. Bandaru, A. Bhole, D. Bonfiglio, A. Cathey Cevallos, O. Czarny, A. Dvornova, T. Feher, A. Fil, E. Franck, S. Futatani, M. Gruca, H. Guillard, J.W. Haverkort, I. Holod, D. Hu, S.K. Kim, S. Korving, I. Krebs, L. Kripner, G. Latu, F. Liu, P. Merkel, D. Meshcheriakov, S. Mochalsky, J.A. Morales, R. Nies, N. Nikulsin, F. Orain, J. Pratt, R. Ramasamy, P. Ramet, C. Reux, N. Schwarz, P. Singh Verma, S.F. Smith, C. Sommariva, E. Strumberger, D. van Vugt, M. Verbeek, E. Westerhof, F. Wieschollek, J. Zielinski, and the JOREK Team. The JOREK non-linear extended MHD code and applications to large-scale instabilities and their control in magnetically confined fusion plasmas. *Nuclear Fusion*, (Submitted), 2021. preprint at <https://arxiv.org/abs/2011.09120>.
- [25] P Merkel and E Strumberger. Linear MHD stability studies with the STARWALL code. *arXiv preprint*, 2015. URL <https://arxiv.org/abs/1508.04911>.
- [26] Olivier Czarny and Guido Huysmans. Bézier surfaces and finite elements for MHD simulations. *Journal of computational physics*, 227(16):7423–7445, 2008. doi:[10.1016/j.jcp.2008.04.001](https://doi.org/10.1016/j.jcp.2008.04.001).
- [27] Dietrich Braess. *Finite Elements: Theory, fast solvers and applications in solid mechanics, 2nd edn*. Cambridge University Press, 2002.

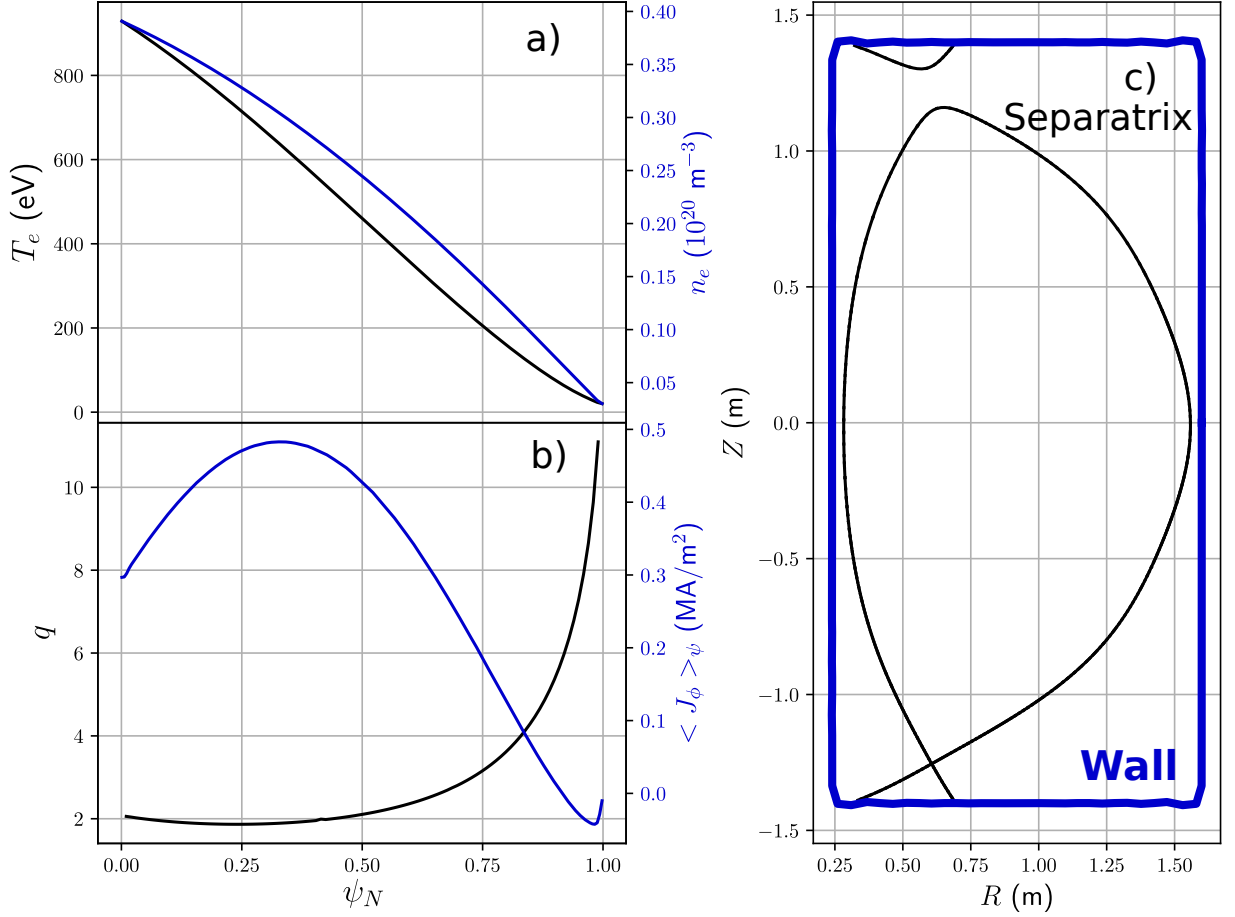
This is the author's peer reviewed, accepted manuscript. However, the online version of record will be different from this version once it has been copyedited and typeset.

PLEASE CITE THIS ARTICLE AS DOI: 10.1063/5.0037115

- [28] C.R. Sovinec, J.R. King, and the NIMROD Team. Analysis of a mixed semi-implicit/implicit algorithm for low-frequency two-fluid plasma modeling. *Journal of Computational Physics*, 229(16):5803 – 5819, 2010. doi:[10.1016/j.jcp.2010.04.022](https://doi.org/10.1016/j.jcp.2010.04.022).
- [29] C.R. Sovinec. Stabilization of numerical interchange in spectral-element magnetohydrodynamics. *Journal of Computational Physics*, 319:61 – 78, 2016. ISSN 0021-9991. doi:[10.1016/j.jcp.2016.04.063](https://doi.org/10.1016/j.jcp.2016.04.063).
- [30] LL Lao, H St John, RD Stambaugh, AG Kellman, and W Pfeiffer. Reconstruction of current profile parameters and plasma shapes in tokamaks. *Nuclear fusion*, 25(11):1611, 1985. doi:[10.1088/0029-5515/25/11/007](https://doi.org/10.1088/0029-5515/25/11/007).
- [31] S.P. Gerhardt. Dynamics of the disruption halo current toroidal asymmetry in NSTX. *Nuclear Fusion*, 53(2):023005, jan 2013. doi:[10.1088/0029-5515/53/2/023005](https://doi.org/10.1088/0029-5515/53/2/023005).
- [32] Jeffrey P Freidberg. *Ideal MHD*. Cambridge University Press, 2014.
- [33] S.P. Gerhardt, R.E. Bell, A. Diallo, D. Gates, B.P. LeBlanc, J.E. Menard, D. Mueller, S.A. Sabbagh, V. Soukhanovskii, K. Tritz, and H. Yuh. Disruptions, disruptivity and safer operating windows in the high-beta spherical torus NSTX. *Nuclear Fusion*, 53(4):043020, apr 2013. doi:[10.1088/0029-5515/53/4/043020](https://doi.org/10.1088/0029-5515/53/4/043020).
- [34] V.D. Pustovitov, G. Rubinacci, and F. Villone. On the computation of the disruption forces in tokamaks. *Nuclear Fusion*, 57(12):126038, oct 2017. doi:[10.1088/1741-4326/aa8876](https://doi.org/10.1088/1741-4326/aa8876).
- [35] SN Gerasimov, P Abreu, M Baruzzo, V Drozdov, A Dvornova, J Havlicek, TC Hender, O Hronova, U Kruezi, X Li, et al. JET and COM-PASS asymmetrical disruptions. *Nuclear Fusion*, 55(11):113006, 2015. doi:[10.1088/0029-5515/55/11/113006](https://doi.org/10.1088/0029-5515/55/11/113006).
- [36] C.F. Clauser, S.C. Jardin, and N.M. Ferraro. Vertical forces during vertical displacement events in an ITER plasma and the role of halo currents. *Nuclear Fusion*, 59(12):126037, oct 2019. doi:[10.1088/1741-4326/ab440a](https://doi.org/10.1088/1741-4326/ab440a).

This is the author's peer reviewed, accepted manuscript. However, the online version of record will be different from this version once it has been copyedited and typeset.

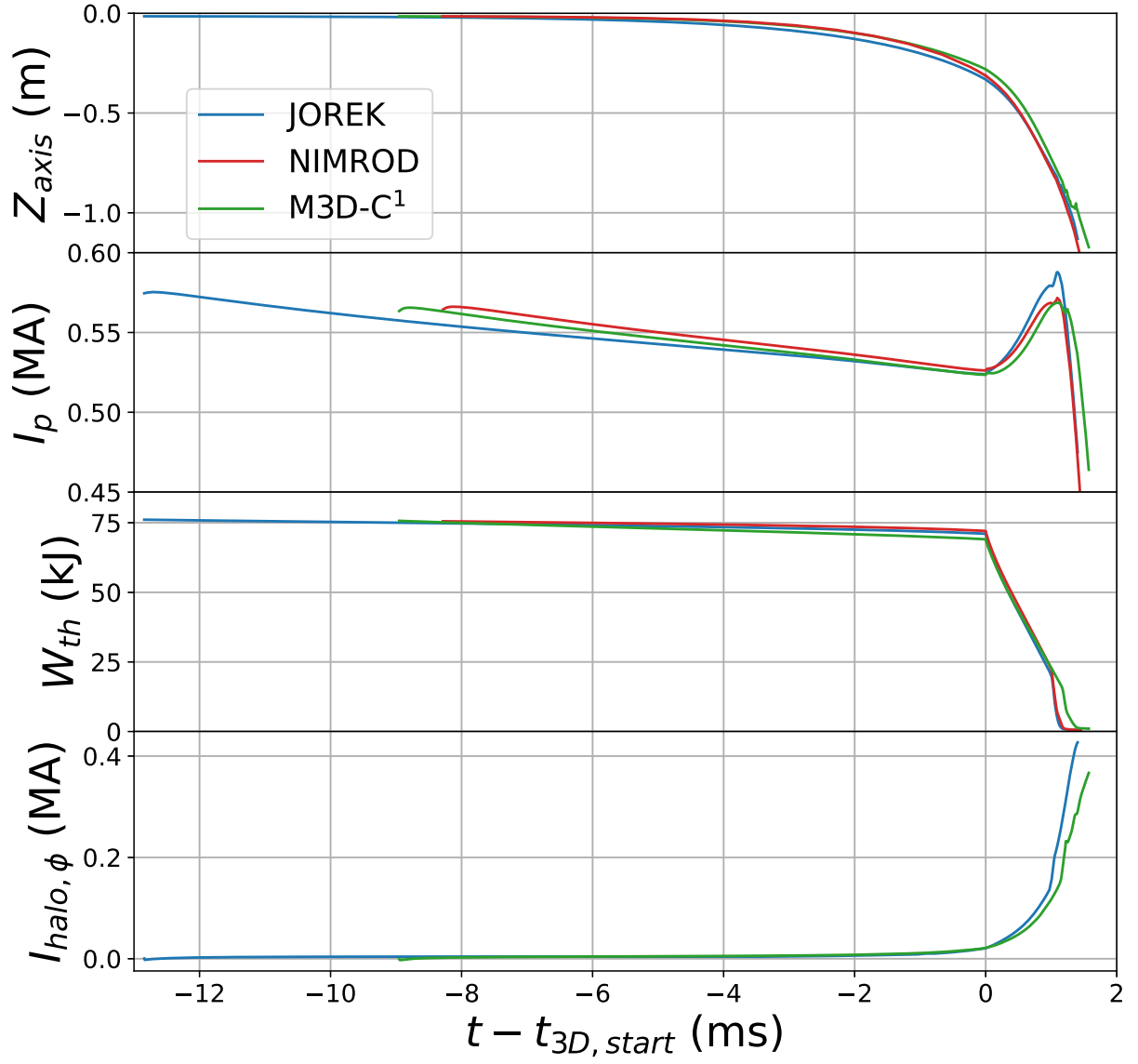
PLEASE CITE THIS ARTICLE AS DOI: 10.1063/5.0037115



I_p	$= 5.74 \times 10^5 \text{ A}$	W_{mag}	$= 1.12 \times 10^5 \text{ J}$	W_{thm}	$= 7.61 \times 10^4 \text{ J}$	d)
β_N	$= 3.83 \%$	β_p	$= 5.32 \times 10^{-1}$	$l_i(3)$	$= 6.98 \times 10^{-1}$	
q_0	$= 2.04$	q_{95}	$= 7.32$	V_p	$= 1.19 \times 10^1 \text{ m}^3$	
R_{xpoint}	$= 6.06 \times 10^{-1} \text{ m}$	Z_{xpoint}	$= -1.26 \text{ m}$	ψ_{xpoint}	$= 1.19 \times 10^{-2} \text{ Wb/rad}$	
R_{axis}	$= 1.07 \text{ m}$	Z_{axis}	$= -1.52 \times 10^{-2} \text{ m}$	ψ_{axis}	$= -4.73 \times 10^{-2} \text{ Wb/rad}$	

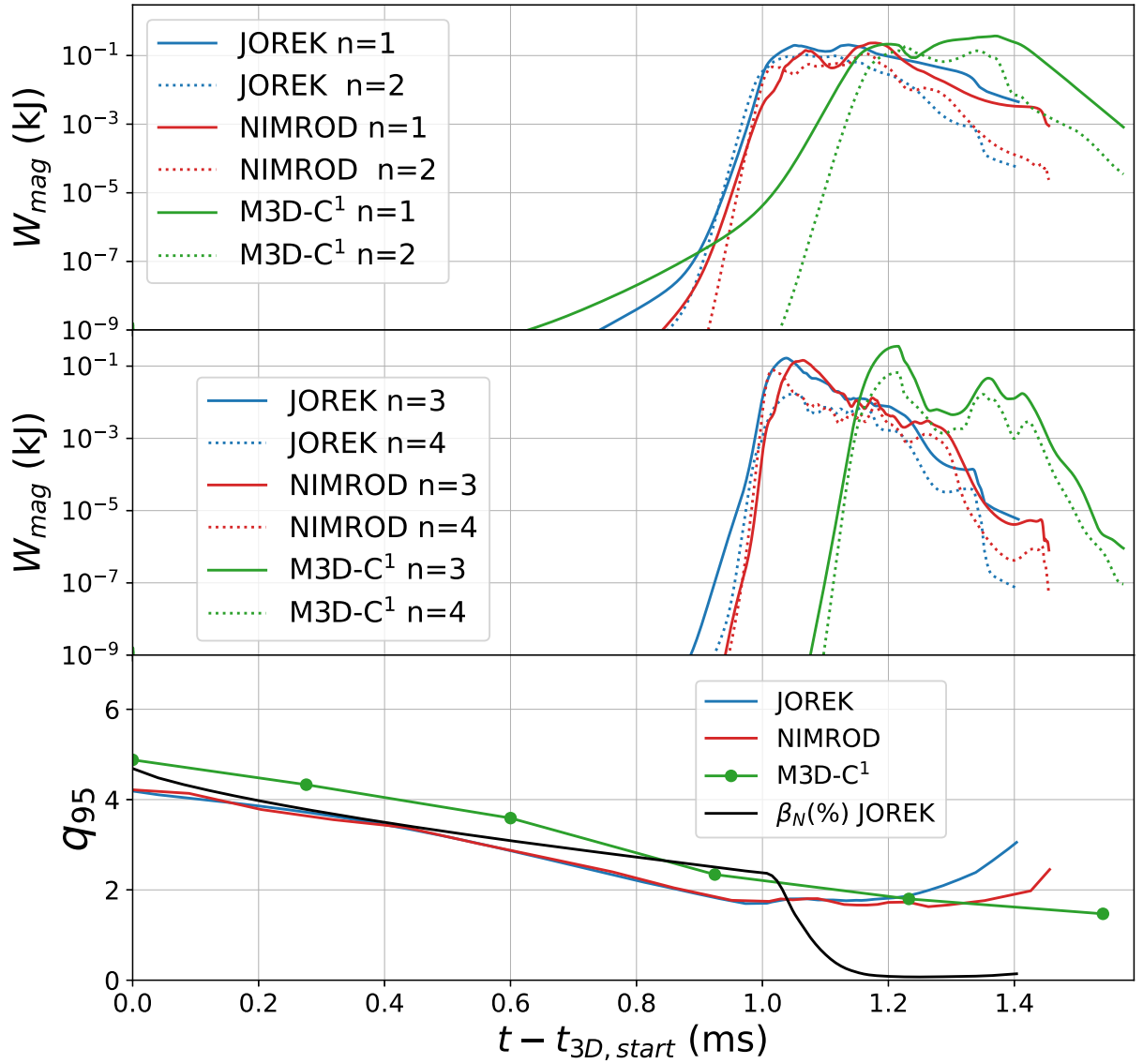
This is the author's peer reviewed, accepted manuscript. However, the online version of record will be different from this version once it has been copyedited and typeset.

PLEASE CITE THIS ARTICLE AS DOI: 10.1063/5.0037115



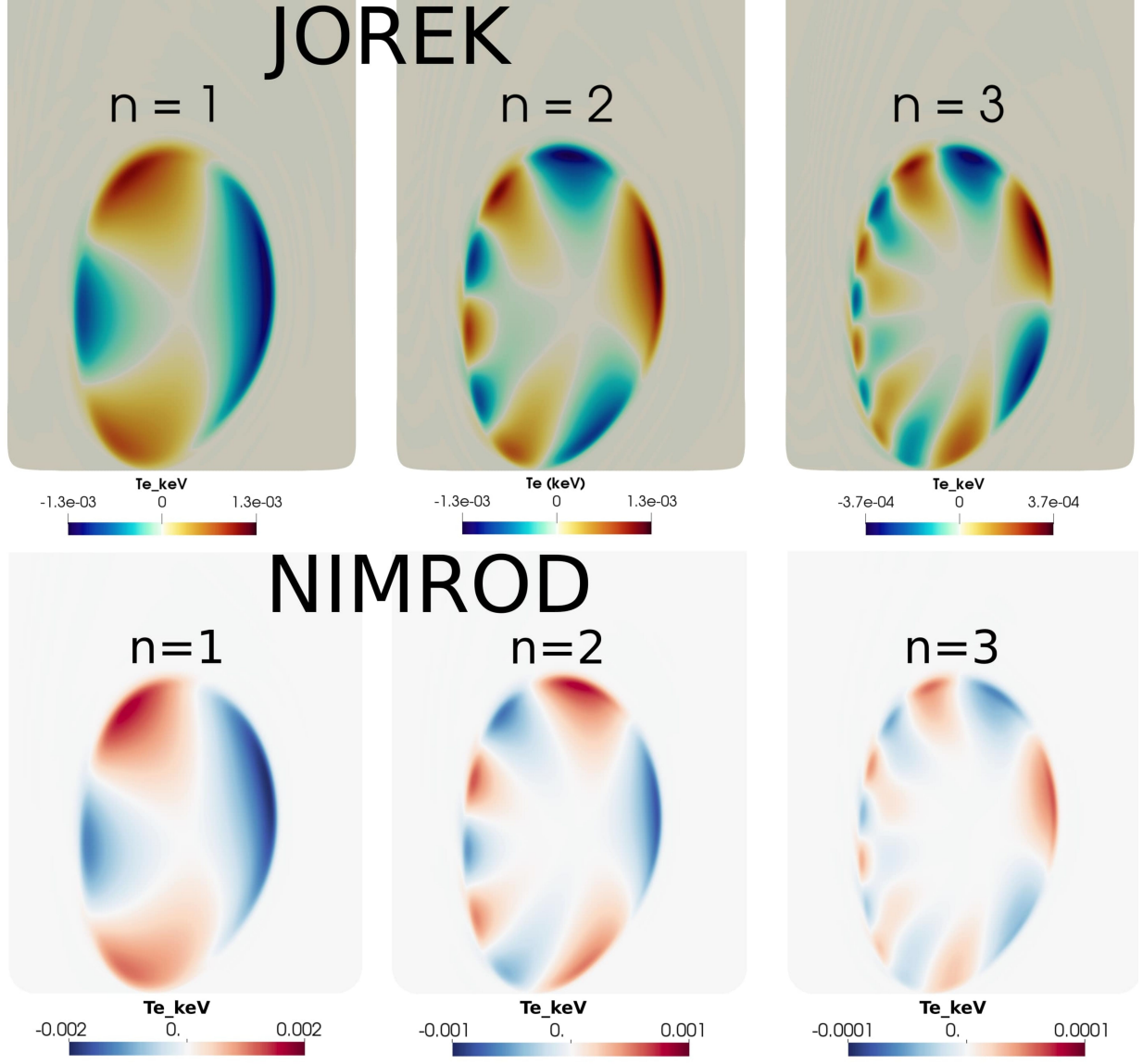
This is the author's peer reviewed, accepted manuscript. However, the online version of record will be different from this version once it has been copyedited and typeset.

PLEASE CITE THIS ARTICLE AS DOI: 10.1063/5.0037115



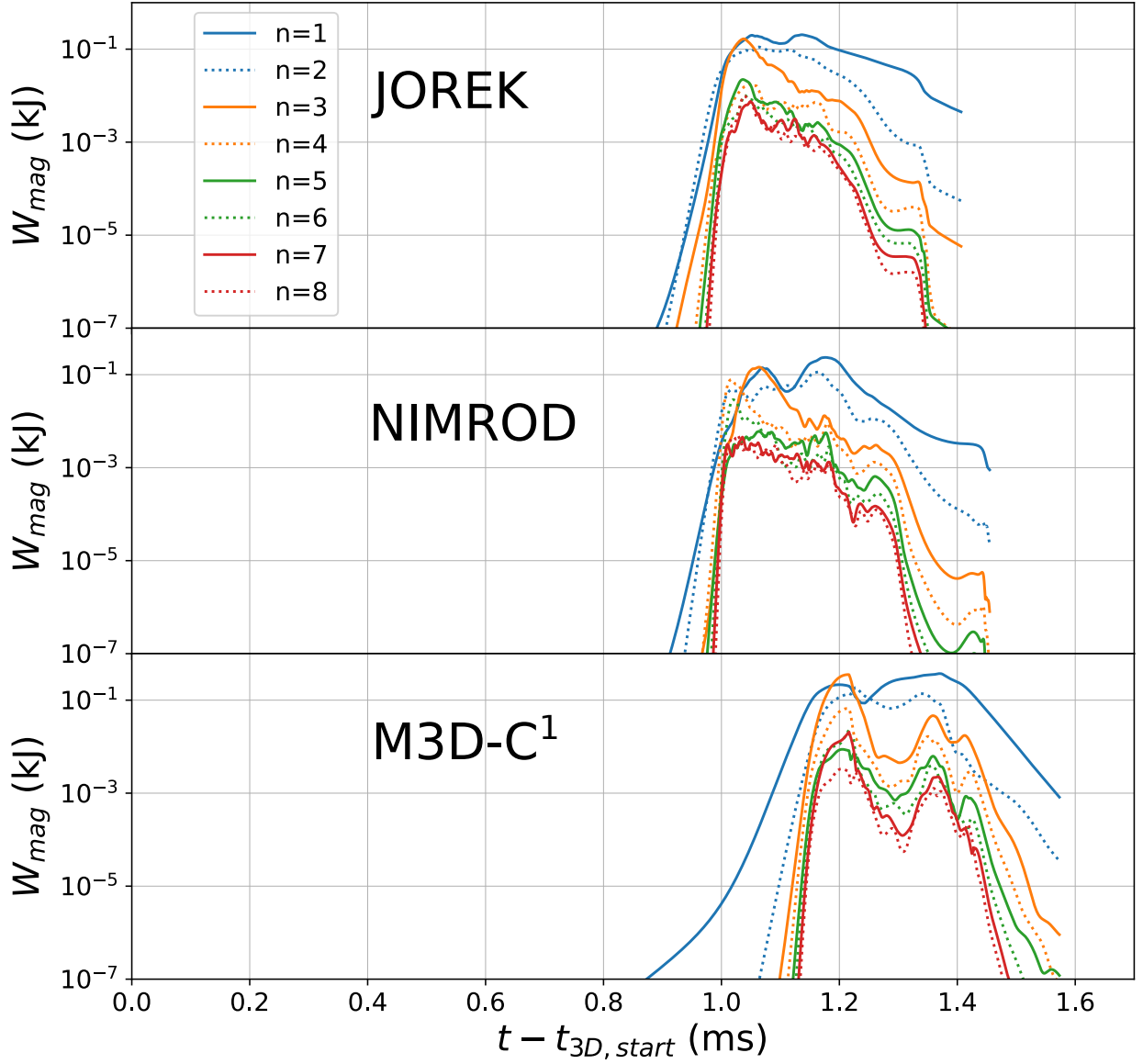
This is the author's peer reviewed, accepted manuscript. However, the online version of record will be different from this version once it has been copyedited and typeset.

PLEASE CITE THIS ARTICLE AS DOI: 10.1063/1.50037115

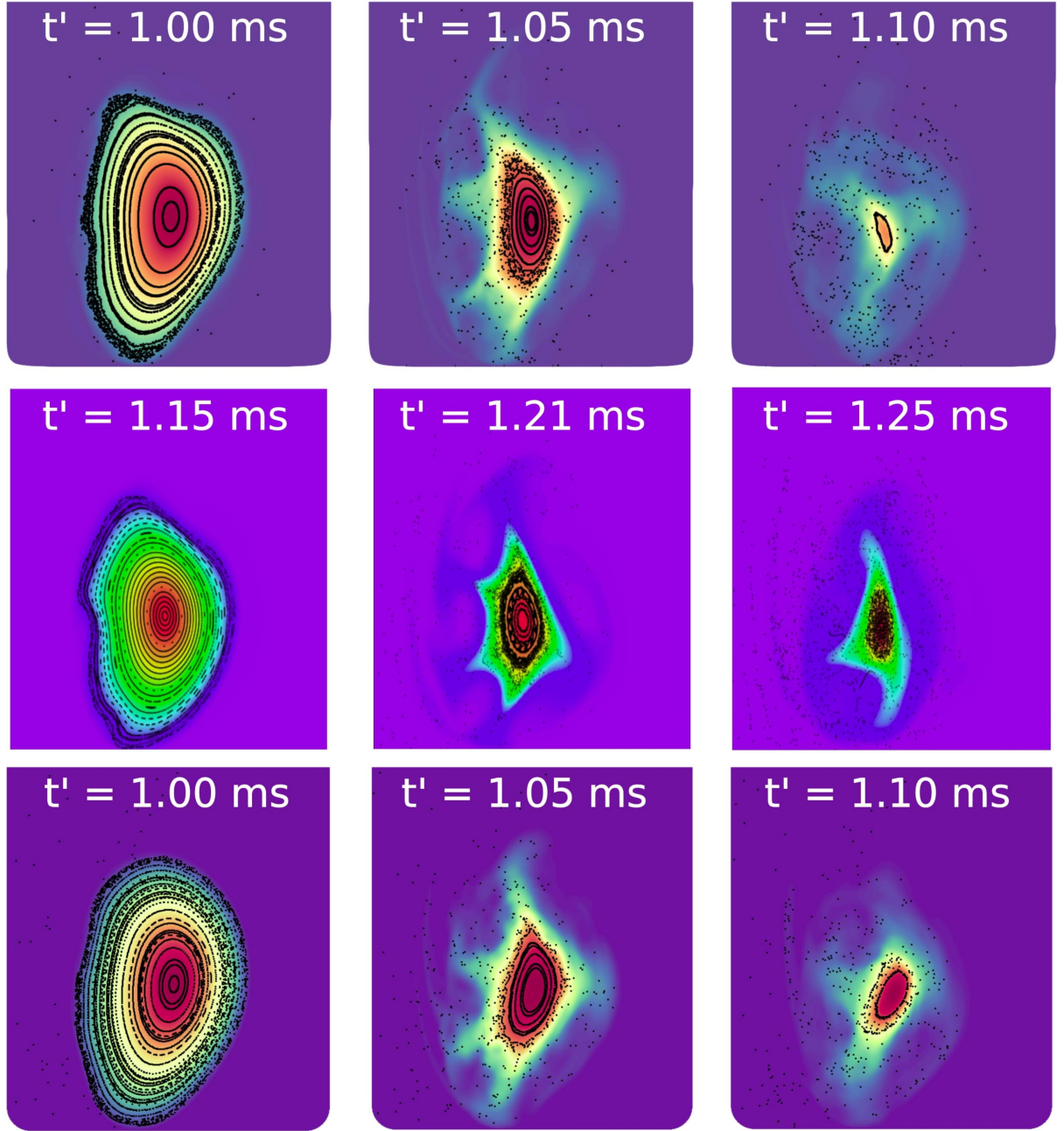


This is the author's peer reviewed, accepted manuscript. However, the online version of record will be different from this version once it has been copyedited and typeset.

PLEASE CITE THIS ARTICLE AS DOI: 10.1063/5.0037115

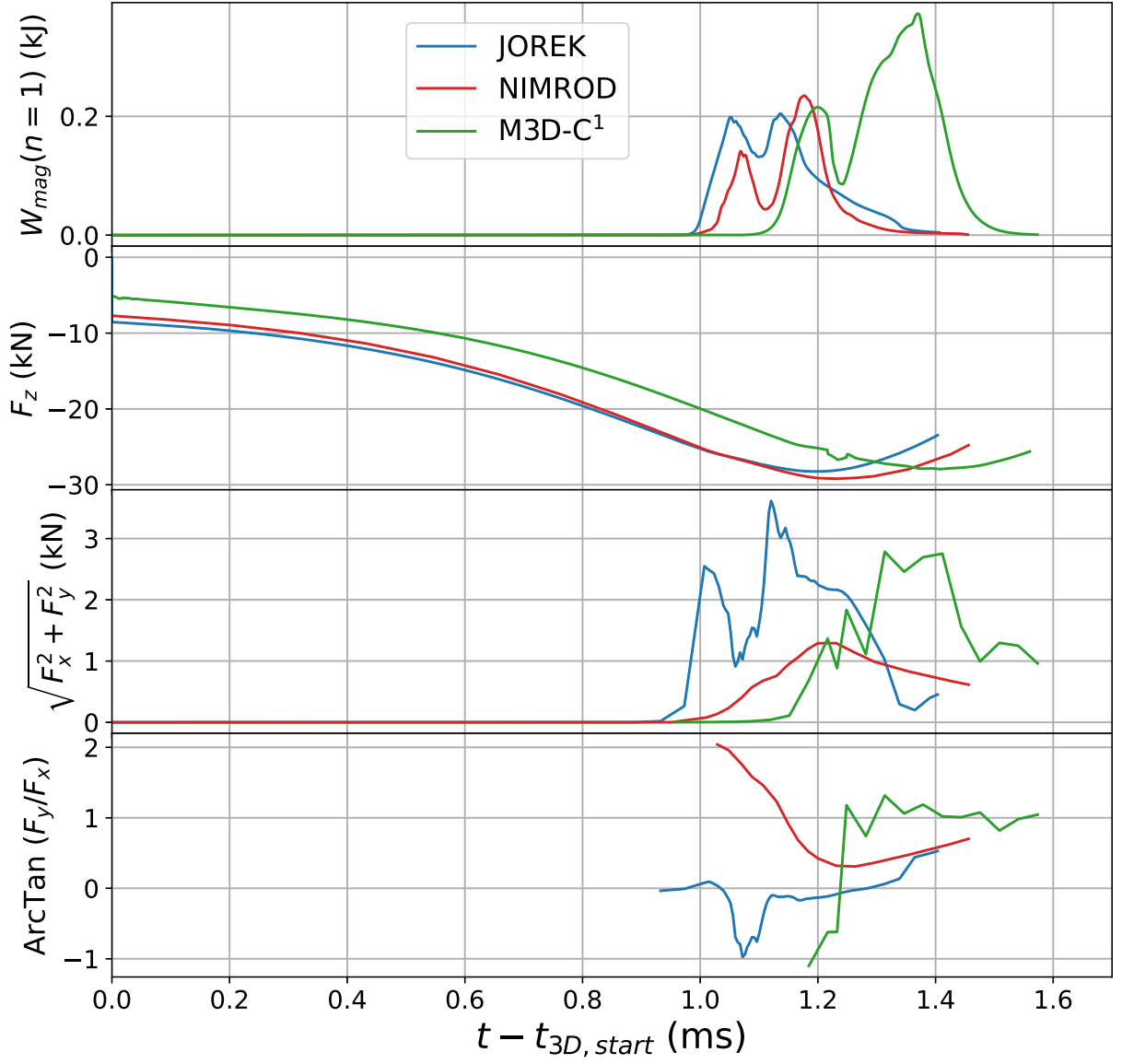


This is the author's peer reviewed, accepted manuscript. However, the online version of record will be different from this version once it has been copyedited and typeset.
 PLEASE CITE THIS ARTICLE AS DOI: 10.1063/5.0037115



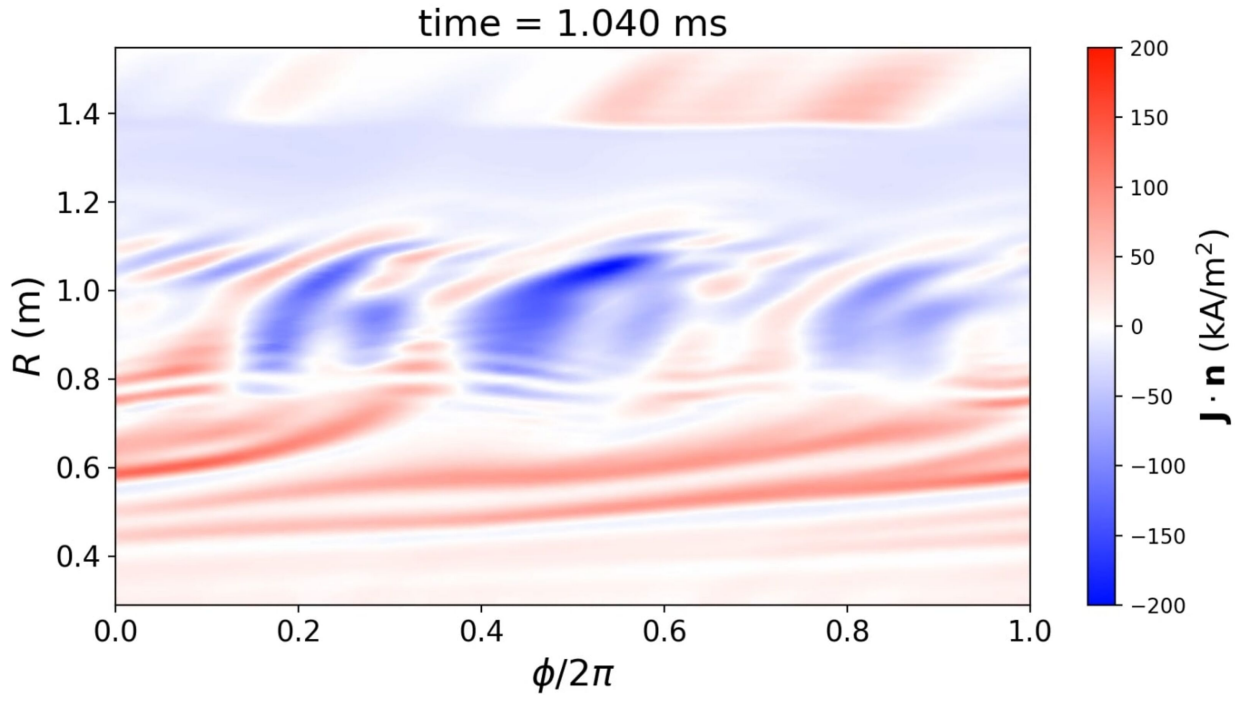
This is the author's peer reviewed, accepted manuscript. However, the online version of record will be different from this version once it has been copyedited and typeset.

PLEASE CITE THIS ARTICLE AS DOI: 10.1063/5.0037115



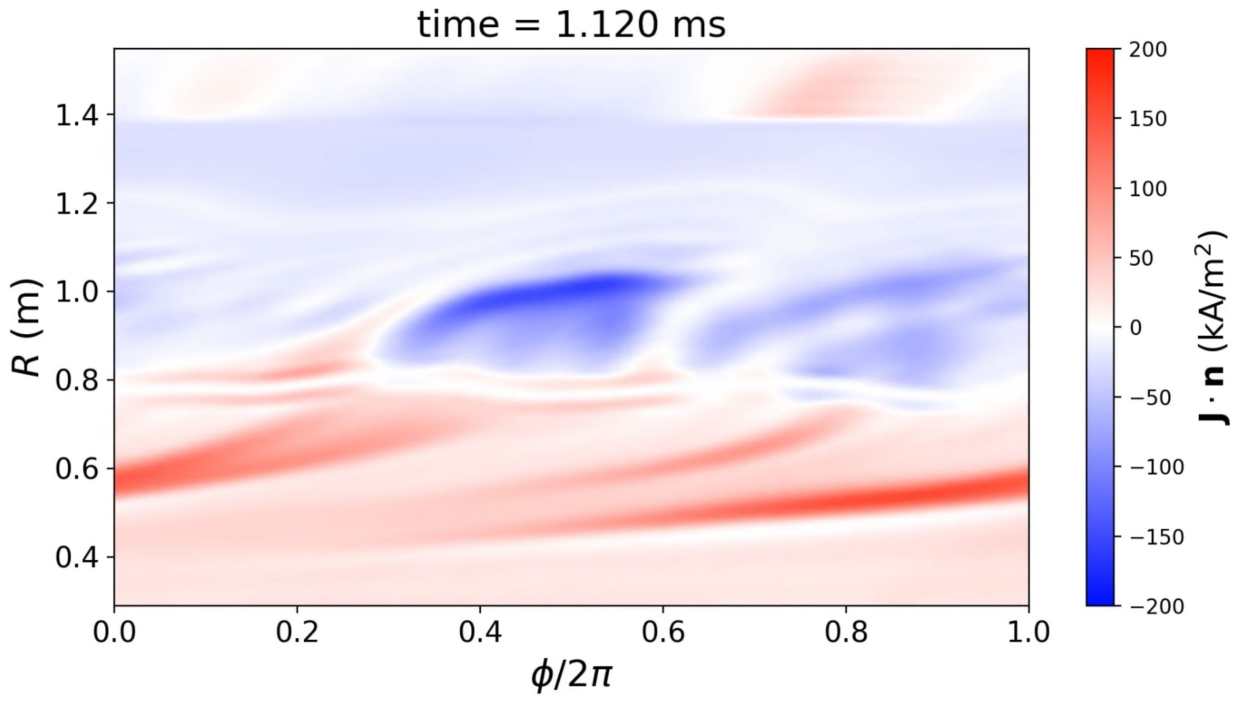
This is the author's peer reviewed, accepted manuscript. However, the online version of record will be different from this version once it has been copyedited and typeset.

PLEASE CITE THIS ARTICLE AS DOI: 10.1063/5.0037115



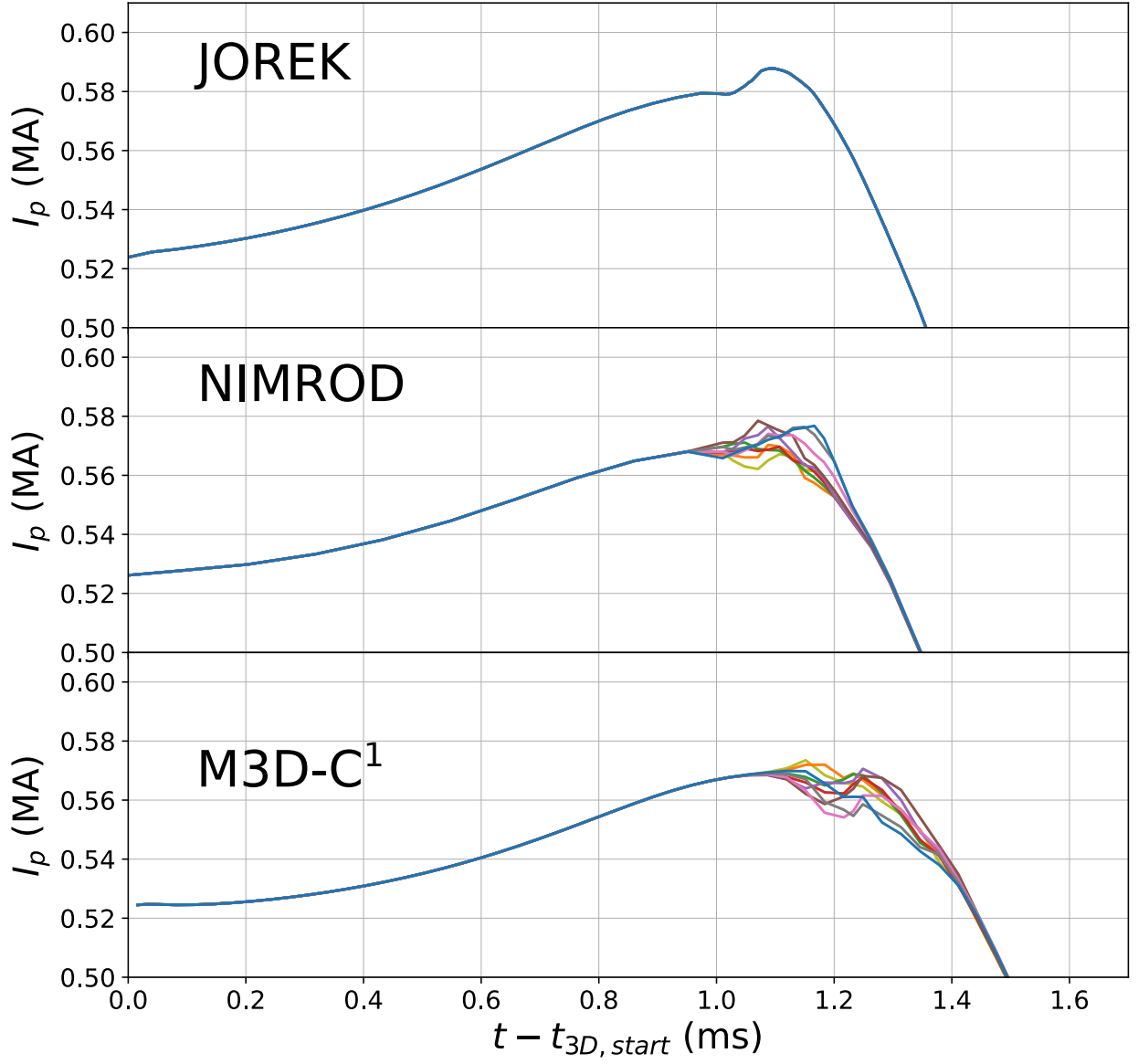
This is the author's peer reviewed, accepted manuscript. However, the online version of record will be different from this version once it has been copyedited and typeset.

PLEASE CITE THIS ARTICLE AS DOI: 10.1063/5.0037115



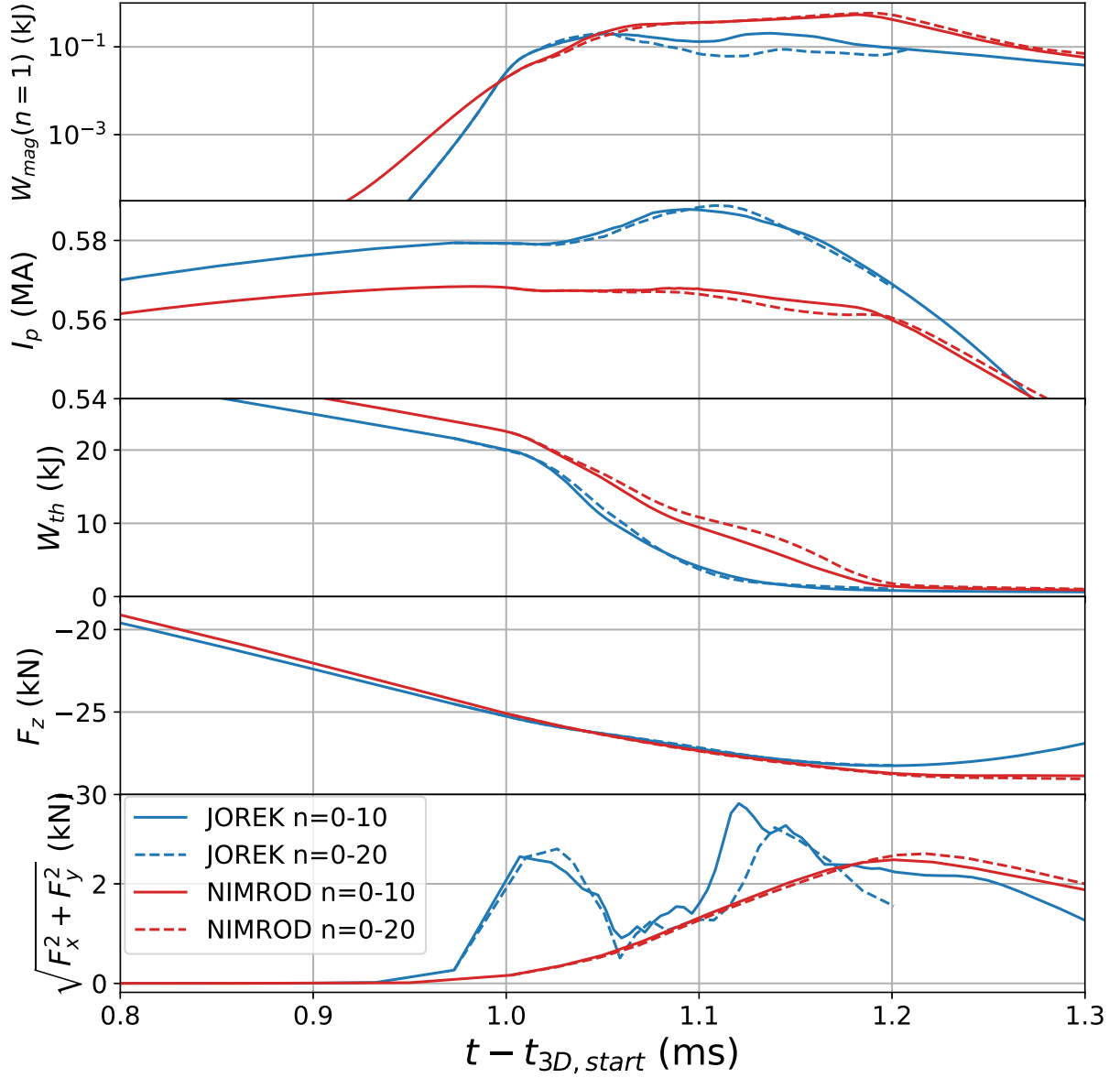
This is the author's peer reviewed, accepted manuscript. However, the online version of record will be different from this version once it has been copyedited and typeset.

PLEASE CITE THIS ARTICLE AS DOI: 10.1063/5.0037115



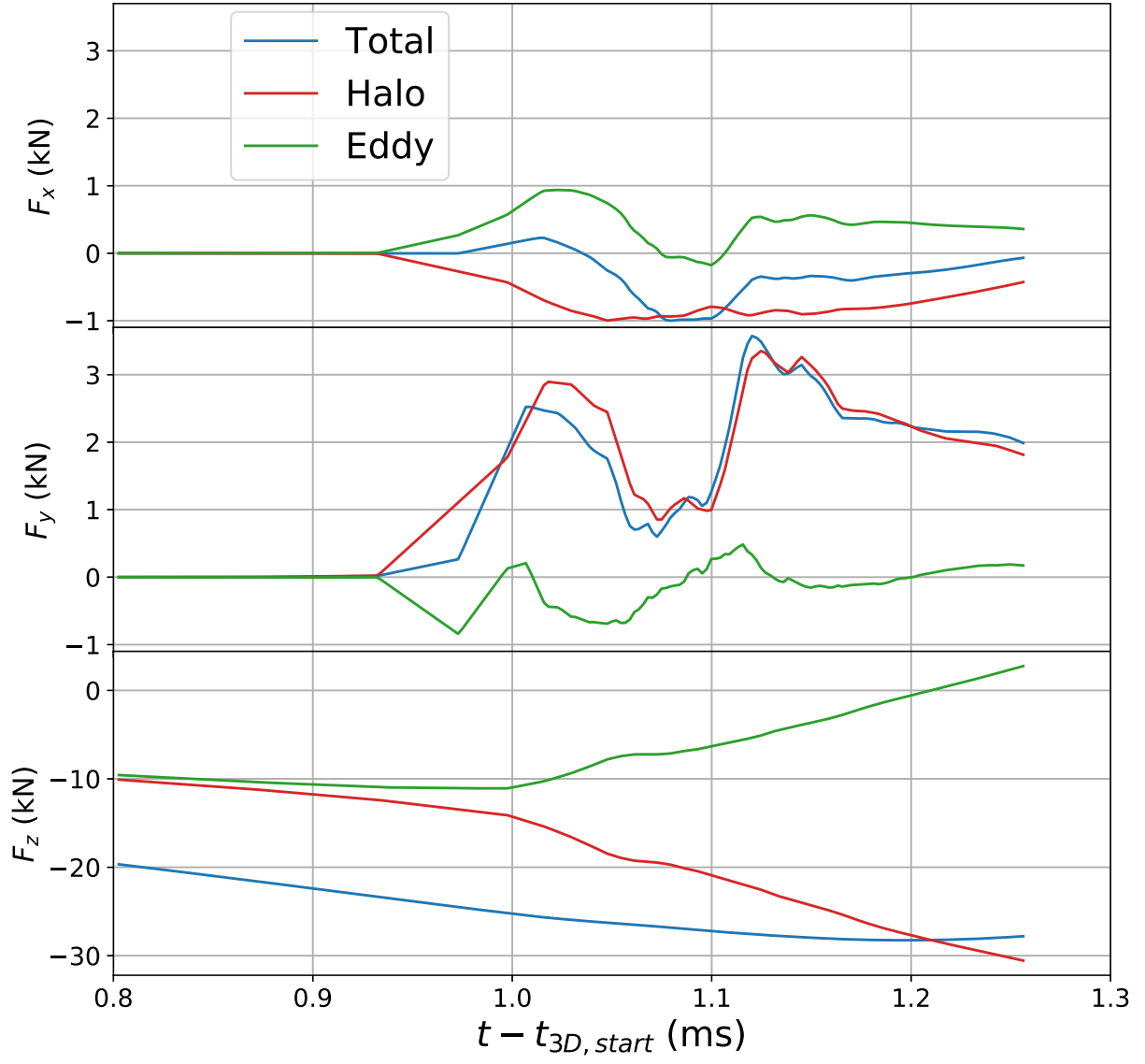
This is the author's peer reviewed, accepted manuscript. However, the online version of record will be different from this version once it has been copyedited and typeset.

PLEASE CITE THIS ARTICLE AS DOI: 10.1063/5.0037115



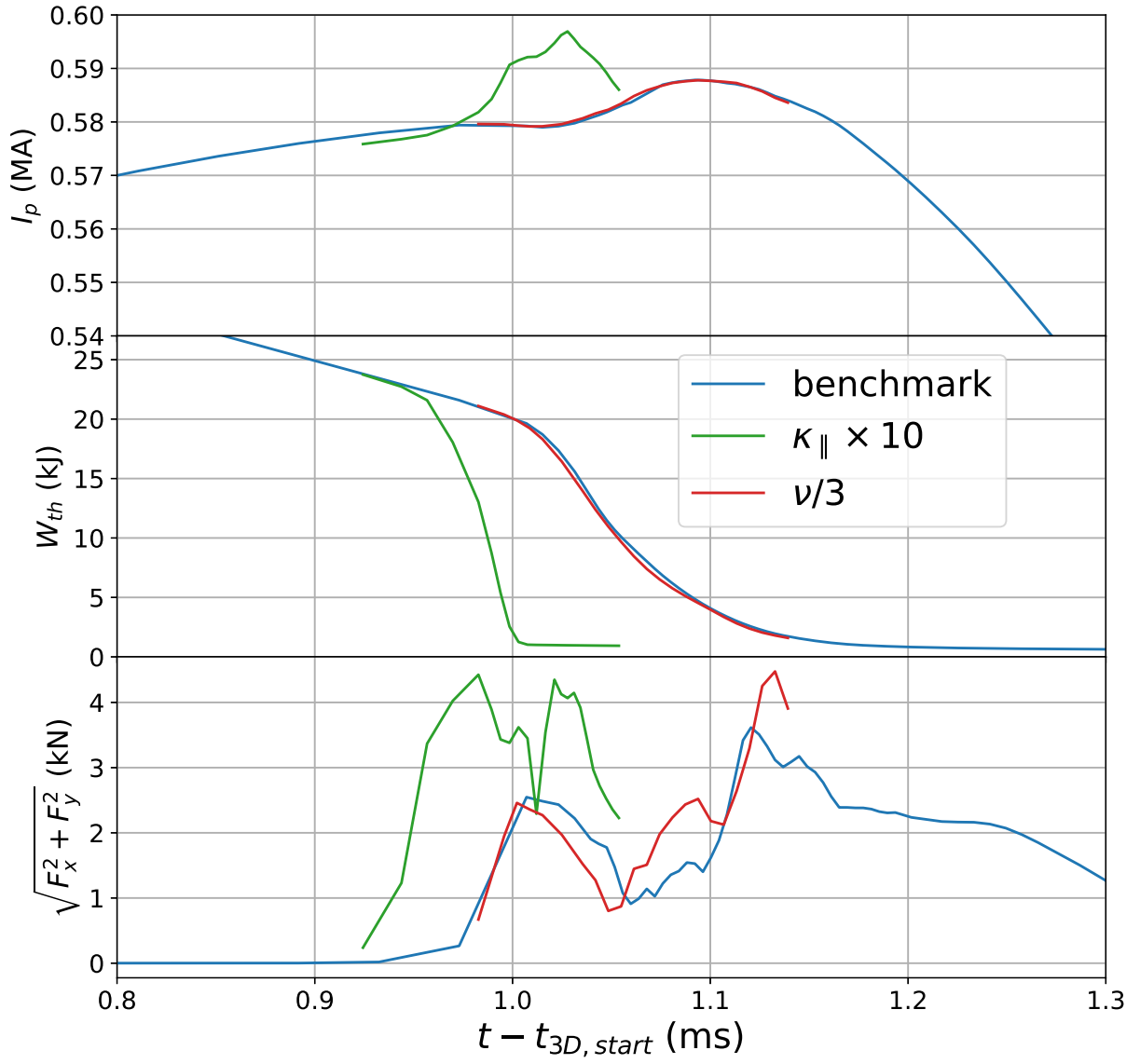
This is the author's peer reviewed, accepted manuscript. However, the online version of record will be different from this version once it has been copyedited and typeset.

PLEASE CITE THIS ARTICLE AS DOI: 10.1063/5.0037115



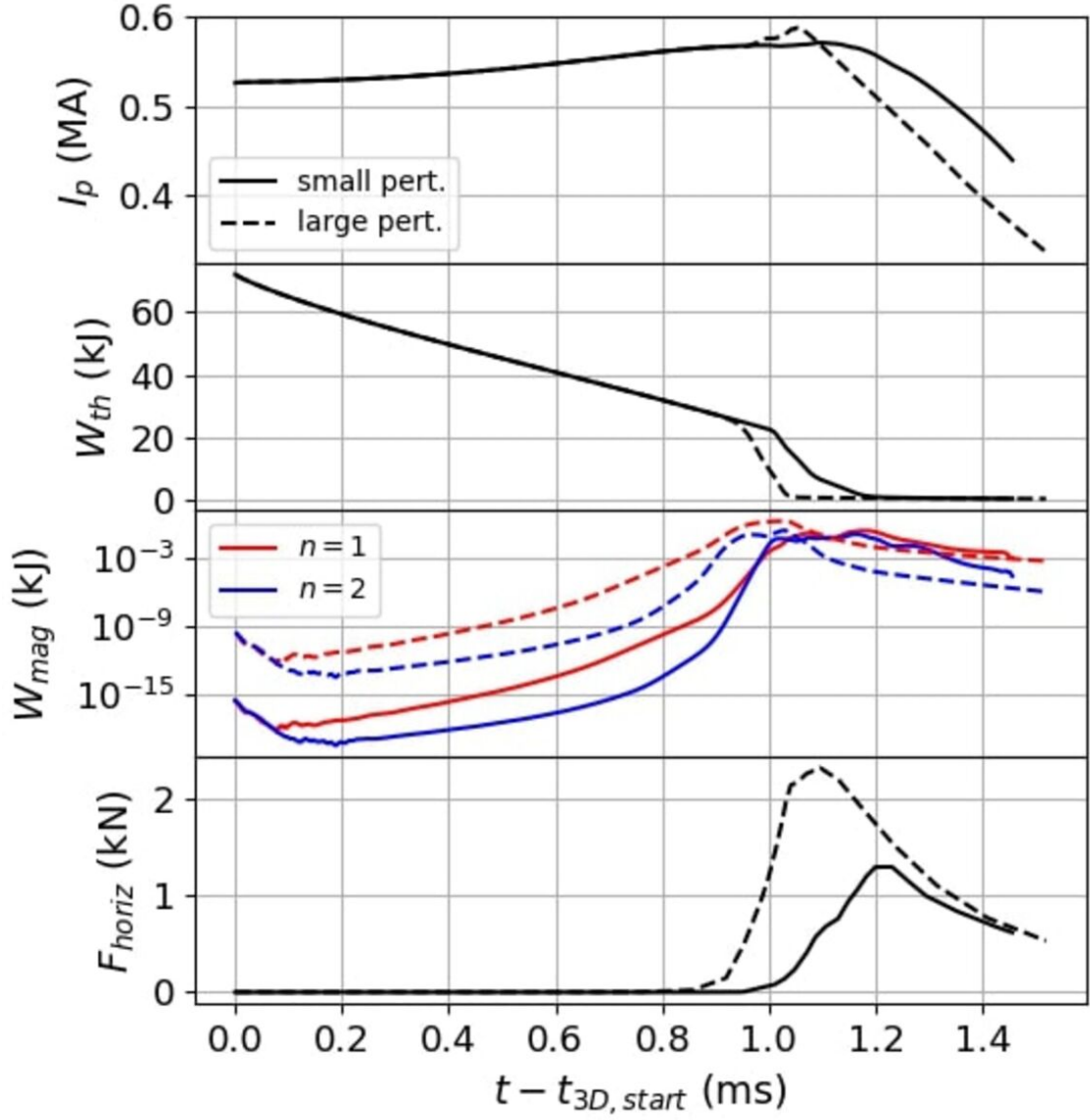
This is the author's peer reviewed, accepted manuscript. However, the online version of record will be different from this version once it has been copyedited and typeset.

PLEASE CITE THIS ARTICLE AS DOI: 10.1063/5.0037115

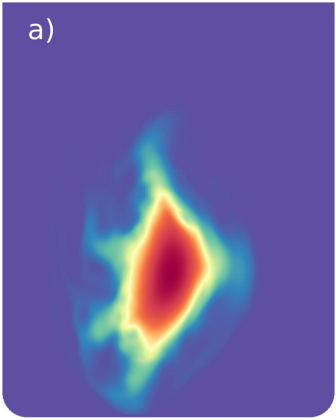
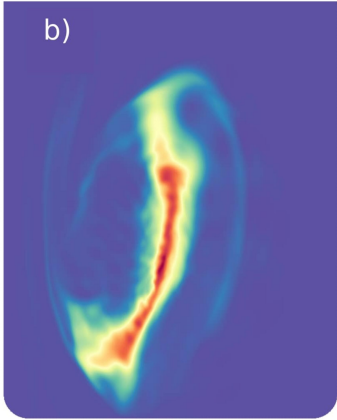
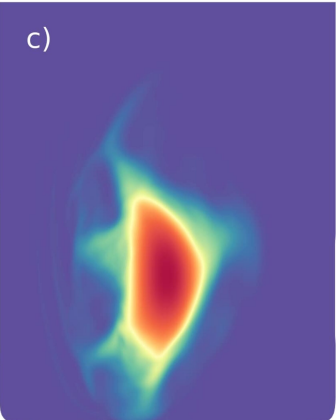


This is the author's peer reviewed, accepted manuscript. However, the online version of record will be different from this version once it has been copyedited and typeset.

PLEASE CITE THIS ARTICLE AS DOI: 10.1063/5.0037115



This is the author's peer reviewed, accepted manuscript. However, the online version of record will be different from this version once it has been copyedited and typeset.
 PLEASE CITE THIS ARTICLE AS DOI: 10.1063/5.0037115

	Small initial perturbation	Large initial perturbation
NIMROD	<p>a)</p> 	<p>b)</p> 
JOEK	<p>c)</p> 	<p>d)</p> 